



# ASK 2026

Prayer  
Diary

THE  
LEPROSY  
MISSION 

# SATENDRA'S STORY

Satendra was just a boy when the first patches appeared on his hands and feet. Then came the swelling on his fingers and toes. He went to the doctor, only to be misdiagnosed and sent away with allergy pills. No one recognised the real cause: leprosy.

As months passed, Satendra's condition worsened. The untreated disease began damaging his nerves. His fingers clawed inward. The skin on his arms turned dark and cracked—like burnt scars. He slowly lost strength in his hands and feet. "I could no longer hold a pen; it was very hard for me to write, so I left school when in 7th grade," he said.

The things he once loved—like playing cricket and football—slipped out of reach. Friends stopped visiting. Instead, they teased him for his appearance "my friends teased me about my leprosy and my skin..."

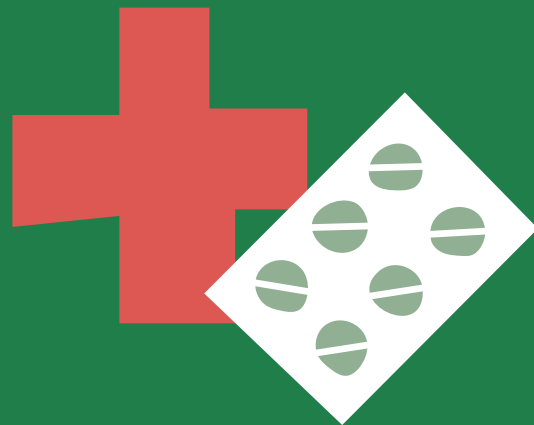
The silence grew louder. So did the loneliness. In a moment of deep despair, Satendra made a heartbreaking decision—he took poison, hoping to end the pain forever. But his family found him just in time, and he was rushed to the hospital. His life was saved.

It was at TLM Nepal's Anandaban Hospital that he finally received the correct treatment. He began multi drug therapy, the cure. Surrounded by caring doctors and nurses, Satendra began the slow journey towards healing—not just of his body, but of his spirit.



Today, he is still recovering, but no longer alone. Satendra's story is one of unimaginable pain—but also incredible resilience. With proper treatment, support, and love, healing is possible.

No child should ever suffer alone. No one should feel ashamed for being sick. Satendra's life is a call to action—to listen, to care, and to never give up.



## Welcome from the International Director



**Dear praying friends and colleagues,**

One of the privileges I have in my role as International Director is to see first-hand the transformation that you are helping to bring about for persons, families, and communities affected by leprosy. It is uplifting to see a person diagnosed and treated for leprosy early so that they will have no further consequences from the disease in their lives. A reconstructive surgery can completely change the life of someone with a leprosy-related disability. Vocational training can enable a young person affected by leprosy to no longer be excluded from their community and to live a normal and productive life. Through your prayers and support, all these things are possible, every single day of the year.

Across the globe, and during these turbulent times, persons, families, and communities affected by leprosy continue to face challenges—including limited access to food and daily essentials, having a regular income, accessing health services and treatment, and facing the consequences of natural disasters. Your prayers and generosity are helping to make these challenges far less – thank you for all that you are doing!

The ASK Prayer Diary highlights the work and ministry of The Leprosy Mission and the journey we are on to bring about transformation for persons affected by leprosy. It is my pleasure to present these to you and ask that you join us on this journey, by praying for our work across the globe. Thank you for your support and for walking alongside us.

In Christ,

**Brent Morgan**  
International Director



## OUR VISION

Leprosy Defeated,  
Lives Transformed

## OUR MISSION

Following Jesus Christ, The Leprosy Mission works with persons affected by leprosy, partners and supporters towards a world where leprosy is defeated and there is healing, dignity, inclusion, and life in all its fullness.

## OUR VALUES

Because we follow Jesus Christ, we value

- Compassion
- Justice
- Integrity
- Inclusion
- Humility
- Collaboration

**I urge you, first of all, to pray for all people. Ask God to help them; intercede on their behalf, and give thanks for them.**

1 Timothy 2:1 (NLT)

Trusting in the knowledge that God hears and answers prayer, holding to the belief that our work is the Lord's, and realising that all our human efforts are in vain without God's blessing and power, we share this ASK Prayer Diary to encourage believers everywhere to pray for the extension of God's Kingdom through this work.

**International Chair**  
Fiona Davidson

**International Vice-Chair**  
Odele Habets

**Treasurer**  
Gordon Brown

**International Director**  
Brent Morgan

### ASK 2026 PRAYER DIARY

Published by The Leprosy Mission International  
Founded in 1874

**Editor**  
Timothy Burton

**Sub-editors**  
Mafe Gomez, Paola Sarta

**Design**  
heatherknight.me.uk

© The Leprosy Mission  
International 2025



## CONTENTS

Welcome	1	Bangladesh: Healthcare and research	60
Vision, Mission, Values	2	Bangladesh: Inclusive development & advocacy	73
What is leprosy?	4	Belgium	50
Where leprosy is found today	6	Chad	44
Contact details	78	Denmark	43
Where we work	80	DR Congo	29
How to get involved	82	Ethiopia	18
		Finland	56
<b>Features</b>		France	45
Naresh's story	24	Germany	66
Yahrah's story	38	Great Britain	11
Zara's story	64	Hungary	21
Micaiah's story	76	India: Country overview	22
		India: Research	30
<b>Devotions</b>		India: Advocacy and communications	40
A prayer from Congo	16	India: Healthcare	62
Fearfully and wonderfully made	32	India: Working with communities	72
Acts of kindness	58	Indonesia	46
Finding God's presence	70	Mozambique	41
		Myanmar - Conflict	10
<b>Prayer Diary by theme</b>		Myanmar - Country overview	55
Advocating for leprosy	54	Nepal - Anandaban Hospital	42
Churches that are fighting leprosy	36	Nepal - Country overview	52
Fundraising	19	Nepal - Community transformation	75
Global Fellowship	9	Netherlands	15
ILEP and GPZL	34	Niger	57
Inner wellbeing	28	Nigeria	26
Leprosy around the world	23	Northern Ireland	63
International Office	37	Norway	69
Organisations of Persons Affected by Leprosy	49	Papua New Guinea & Bougainville	35
Our Christ-Centered Approach	31	South Africa	27
Our partners	67	South Korea	69
Research	48	Spain	27
TLM Shop Australia	68	Sri Lanka	51
TLM Shop (UK)	13	Sweden	74
World Leprosy Day	12	Switzerland	53
		Timor-Leste	14
<b>Prayer Diary by Country</b>			
Australia	61		
Bangladesh: Country overview	20		

# WHAT IS LEPROSY?



Leprosy is often considered a disease of the past. In fact, it continues to destroy lives all over the world, as one person every two minutes is diagnosed with the disease.

Leprosy is a mildly infectious disease caused by the bacillus *Mycobacterium leprae*. It is most common in areas of poverty, as overcrowding, poor nutrition, and bad sanitation weaken people's immune systems, so they are less able to fight the disease.

## What does leprosy mean for those affected?

### Physically

The first signs of leprosy are pale patches with no sensation. Leprosy is curable with a treatment known as Multi Drug Therapy (MDT), but if it goes untreated, the consequences can be severe.

*M. leprae*, the bacillus that causes leprosy, also attacks the nerves of the body. This means that people affected by the disease may see changes in their bodies, including a loss of feeling in their hands and feet. This is dangerous; a cut on the foot from walking on rough terrain may go unnoticed, or someone might pick up a boiling pan without realising the damage being done to their skin. These injuries can lead to ulcers and even amputations in extreme cases.

The damage that leprosy does to nerves around the elbows and knees can also lead to muscle paralysis, resulting in clawed hands and drop foot. Paralysis of the eye muscles can eventually lead to blindness.

Acute episodes of inflammation called 'reactions' happen in up to half the people diagnosed with leprosy. Reactions can cause swelling and pain in the skin, nerves, and eyes, and patients may need to be hospitalised for months.

### KEY LEPROSY FACTS:

- Globally, around 200,000 people are diagnosed with leprosy every year.
- There are more than 100 laws that explicitly discriminate against people affected by leprosy.
- We believe that, with the right commitment and resources, we can be the generation that ends the transmission of leprosy.
- Leprosy is reported in 124 countries and 78% of all new cases occur in India, Brazil, and Indonesia. (2022 data)

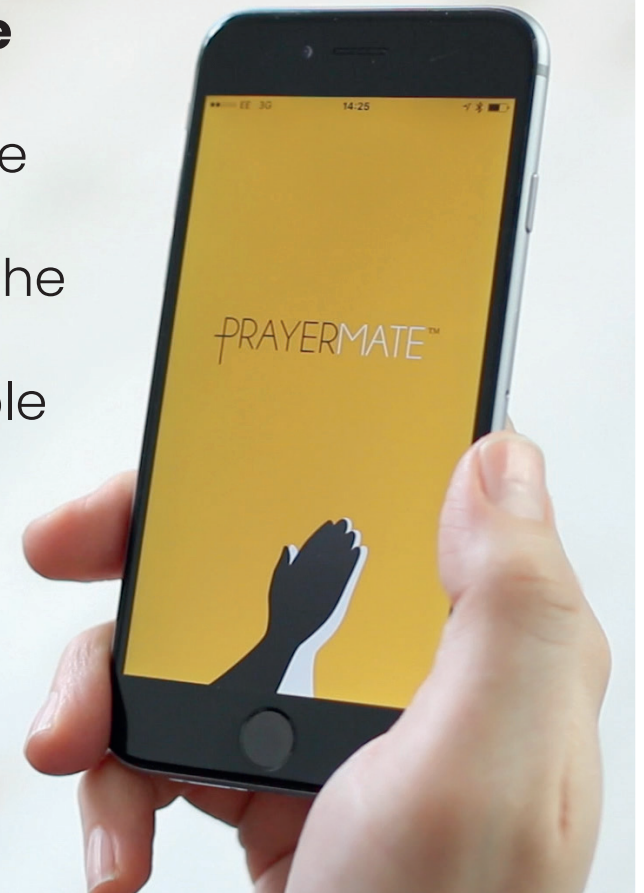
### Socially

The social consequences of leprosy can be as severe as the physical ones. The stigma surrounding leprosy in many communities means that people affected by the disease face incredible levels of discrimination from their communities, friends, and family.

Children will find they are turned away from their schools and their families. Adults are turned away from jobs and from housing. Far too many people affected by leprosy have no choice but to beg in order to get by.

In the coming pages you will see a glimpse of how we are trying to turn the tide on that discrimination across the world.

Pray for people affected by **leprosy** with the latest prayer requests from the fight to defeat leprosy available on your phone every day.



Wherever and whenever you feel inspired to pray for persons affected by leprosy, you can now follow The Leprosy Mission via the PrayerMate app for the latest updates and prayer points.

PrayerMate is the only place to find the very latest prayer requests from across the world of TLM.

[praynow4.org/leprosymission](https://praynow4.org/leprosymission)





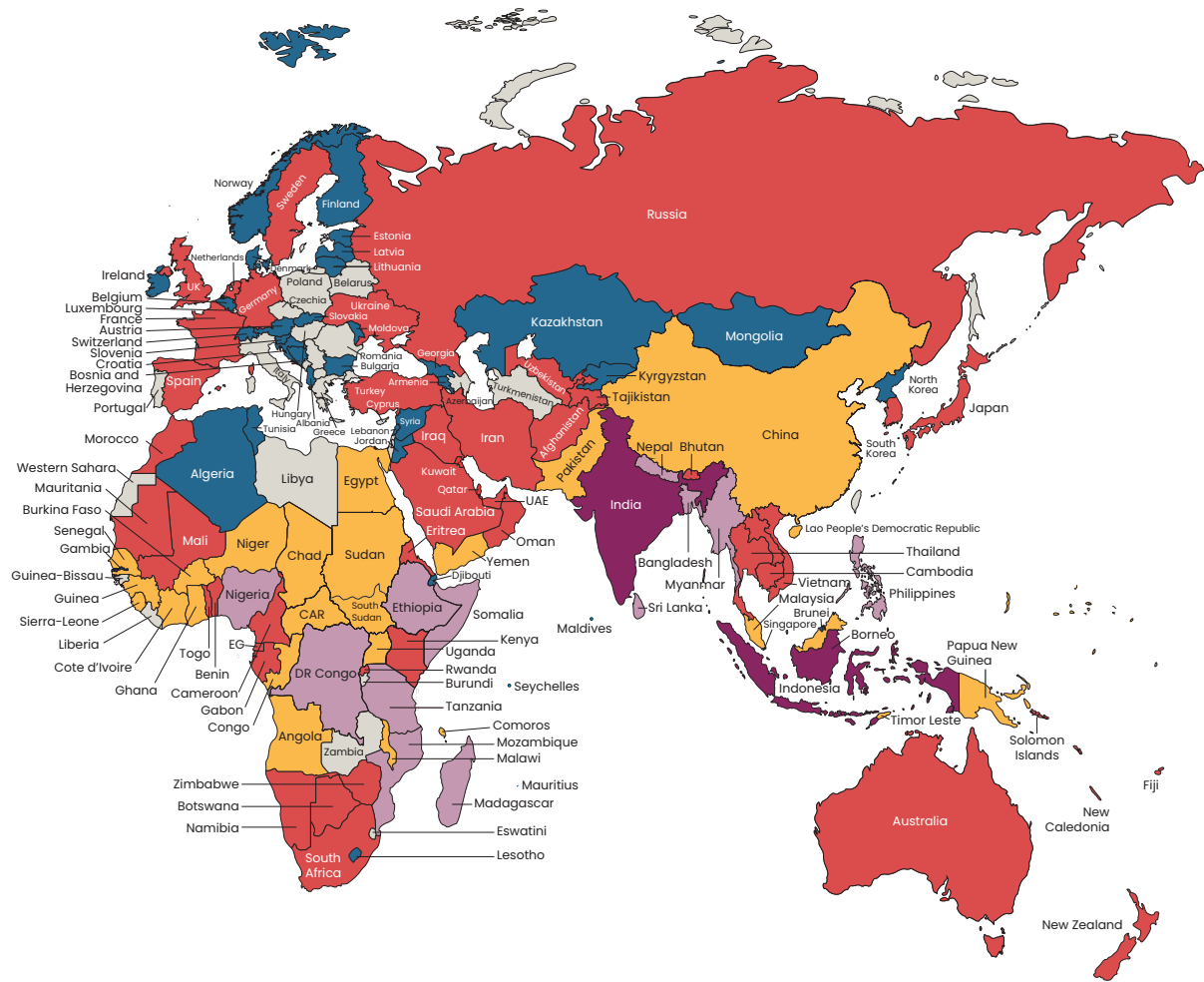
# WHERE LEPROSY IS FOUND TODAY

For a map of the countries where TLM works see page 84

TLM is committed to providing long-term quality care and support in the name of Jesus Christ, for as long as there are people affected by leprosy who need it.



Source: WHO 2023





# A legacy that lasts for generations

Savitri, a mother, wife and rice farmer in rural India constantly battled with pain and numbness in her hands and feet. Injuries refused to heal, ulcers formed, treatments didn't work and worry consumed her. No one could provide an answer for her condition.

Thankfully, Savitri reached Chandkhuri Hospital where she was diagnosed with leprosy. She was supported by staff who welcomed her, treated her wounds, helped to restore her confidence and advocated for her by spreading the truth about leprosy to people in the village.

Your gift will generate compassion and understanding, a legacy which would continue to spread life-changing knowledge to families and communities for years to come.

**For more information about leaving a gift in your Will, please contact your local TLM office (p.78).**

## TLM'S GLOBAL FELLOWSHIP

1-4 JAN



The Leprosy Mission is represented in 27 countries across the world. We refer to this network of 27 countries as The Leprosy Mission's 'Global Fellowship' because all of these countries are united by our love of God and our desire to see leprosy defeated and lives transformed.

Of these 27 country teams, 13 are working directly with persons affected by leprosy in countries where leprosy still exists and the remaining 14 are working from Europe, Australia, and New Zealand to raise funds for the fight to end leprosy.

By working together as a Global Fellowship, we are putting ourselves in the best position to serve persons affected by leprosy and end the disease for good. By joining us in prayer through this ASK Prayer Diary, you are an integral part of this Global Fellowship. Thank you.

### PRAYER POINTS

**MON:** We start this year with a prayer that recognises the solidarity of thousands of people across the world who will pray for a world without leprosy in 2026. May these prayers honour God and the people we aim to serve.

**TUE:** TLM's Global Fellowship is governed by a global level Board of Trustees. Please pray for these trustees this year, that God will grant them wisdom and hearts that discern His will.

**WED:** Recent years have brought conflict and climate disasters which have directly impacted our teams across the world. Please thank God that our Global Fellowship has united around those of our countries that have been affected and pray that we will always do so.

**THU:** The Leprosy Mission is an organisation for persons affected by leprosy and we want to connect as closely as possible with Organisations of Persons Affected by Leprosy (OPLs). Pray that our teams across the world will be blessed by fruitful, mutually supportive partnerships with OPLs.

**FRI:** Each year our teams meet together, sometimes in person and sometimes online. These are important moments of connection when we can strengthen our relationships, grow together, and make plans for the future. Please pray that God will bless these meetings in 2026.

**SAT:** Please pray for those who are responsible for safeguarding within our Global Fellowship. Their work is so essential and often challenging. May they be blessed in 2026.

**SUN:** Pray that in 2026, we will seek the Lord with open and adoring hearts.

### GLOBAL FELLOWSHIP LEADERS

**Photo:** TLM's global teams gathered together in New Delhi to celebrate 150 years of TLM and to launch our Global Strategy 2025-2030.

Fiona Davidson – Global Fellowship Board Chair  
Brent Morgan – International Director



## MYANMAR: Conflict and earthquake recovery

5-11 JAN

**When you pass through the waters, I will be with you; and when you pass through the rivers, they will not sweep over you. When you walk through the fire, you will not be burned; the flames will not set you ablaze.**

Isaiah 43:2



In 2025, we witnessed a nationwide escalation of conflicts in multiple locations as territory was gained by armed groups at the expense of the military junta.

This escalation worsened the humanitarian crisis, with the number of internally displaced people surpassing 3.5 million. According to the UN, a third of the Myanmar population was in need of assistance last year (19.8 million people). The economic situation in Myanmar also worsened, with sky-high inflation and a rapid expansion of the informal economy and illegal businesses.

It was within this context that a 7.7 magnitude earthquake struck in March 2025, killing more than 3,700 people and injuring more than 5,000. TLM's staff and the communities we support were badly affected. Our workshops and offices were damaged, homes and churches were destroyed, and many were left without clean water and food.

TLM's earthquake response included cash support to help families with food and to make home repairs. We also dug wells to access clean water, we distributed assistive devices such as wheelchairs, crutches, and prostheses, and expanded our leprosy rehabilitation services to support earthquake and conflict victims.

**Photo:** One of the 440 crutches donated by TLM Myanmar to the Ministry of Health to support earthquake victims.

### PRAYER POINTS

**MON:** Pray for peaceful solutions to Myanmar's challenges, avoiding further conflict and cycles of defeat. Pray for Internally Displaced People, especially those affected by increased bombings amidst their shelters and worsening humanitarian needs.

**TUE:** Pray for Myanmar's struggling economy — for job opportunities, protection for those forced to migrate, and solutions to labour shortages.

**WED:** Pray for true peace and reconciliation. The military's planned election lacks support and inclusivity. Ask for a path that includes all voices and brings lasting peace.

**THU:** Pray for resilience amid frequent disasters. The March 2025 earthquake near Mandalay caused major damage and ongoing hardship. Many are still clearing debris and are far from rebuilding.

**FRI:** Pray for TLM Myanmar's earthquake response. We are going to continue long-term rehabilitation for people who were injured in the earthquake, and support the churches we partner with who were badly hit by the earthquake. Pray for strength and resources to continue this vital work.

**SAT:** Pray for Myanmar's Organisation of Persons Affected by Leprosy, for their involvement in the emergency response and their growth. Pray for their efforts to expand into Sagaing and bring in younger members to strengthen their future and voice globally.

**SUN:** Pray for the safety, health, and wellbeing of all staff and volunteers. Many travel in challenging conditions and work in sensitive locations. Pray for protection from disease, mental strain, and security threats.

## GREAT BRITAIN

12-18 JAN



The Leprosy Mission Great Britain family is spread across England, Wales, Scotland, The Channel Islands, and The Isle of Man. We support nine countries across Africa and Asia, working together to transform communities affected by leprosy.

Christ is at the centre of everything we do. We meet every morning to seek God's leading in our work. We also pray for people affected by leprosy, our faithful supporters and volunteers, and our colleagues overseas.



Become a Prayer Partner

### PRAYER POINTS

**MON:** As we keep our eyes fixed on Jesus, pray that we will see His guiding hand in everything we do. Please pray that He will inspire us with His wisdom and energise us when the work is challenging.

**TUE:** Please pray that people affected by leprosy will always be at the centre of our work. Pray that we will listen and serve them with compassion and wisdom. As we work together to end stigma and discrimination, may we have the courage to stand up for justice, inclusion, and dignity for all.

**WED:** Thank God for our faithful supporters and their compassion for people affected by leprosy. Pray that they will be encouraged by the lives they are changing across the world. May they know the Lord's blessing, as together we work to end leprosy.

**THU:** Praise God for our dedicated church representatives who hold fundraising events across Great Britain. May He inspire them as they share God's love for the marginalised and rejected. Pray that He will stir more churches to join the mission to end leprosy.

**FRI:** As we see the impact of government aid budget cuts on charities around the world, pray that *Jehovah Jireh*, the Lord who provides, will bless our mission. Ask that He will open doors to new fundraising opportunities, particularly for Trusts and Foundations in the United States.

**SAT:** Ask that God will bless our research partnerships with universities and inspire scientific breakthroughs in the fight against leprosy. Pray too for an early diagnostic test, so we can find and cure people quickly before the disease causes permanent disability.

**SUN:** As we raise awareness about leprosy, pray that we will touch hearts through the stories of people affected by the disease. Please ask for wisdom as we reach out to younger generations. May they, too, be inspired to follow Jesus' example of healing and love.

### SENIOR TEAM

Peter Waddup – CEO  
Sian Arulanantham – Head of Programmes and Policy  
Arminda O'Reilly – Head of HR  
Louise Timmins – Head of Fundraising and Communications

**Photo:** Peter Waddup and Louise Timmins share the happy news that work to change lives in Odisha's leprosy colonies will soon begin.

## WORLD LEPROSY DAY

19–25 JAN



World Leprosy Day takes place every year on the last Sunday of January. This year's World Leprosy Day is taking place this week, on 25 January.

This day is a day of pride for Organisations of Persons Affected by Leprosy (OPLs) and an opportunity for organisations and churches to celebrate the contributions of persons affected by leprosy to their communities.

It is also a day to focus our efforts on a world where there is no more leprosy transmission, drawing the attention of governments, donors and churches to the opportunity that stands before us.

All of this happens through in-person events, celebrations, and services, as well as through online campaigns. Please join us this year in any way you can!

**Photo:** Sher Gurung, Hospital Administrator at TLM's Anandaban Hospital in Nepal, speaks at a World Leprosy Day event at the hospital.

### PRAYER POINTS

**MON:** We pray God's blessing over all the OPLs that are marking this week. May they rightly feel proud of all they contribute to their communities.

**TUE:** We pray that our government partners will feel engaged and inspired by World Leprosy Day, and will be newly committed to working on leprosy.

**WED:** Please pray for all the digital teams that have been working on World Leprosy Day campaigns over recent weeks and months. Please pray that these campaigns will move people to take action.

**THU:** Give thanks with us for all the individuals and churches that will give money this World Leprosy Day. We pray those funds will be blessed.

**FRI:** We pray today for all the teams that are in the final stages of planning their World Leprosy Day events. May these events be a great success.

**SAT:** We pray for all the churches that will hear about leprosy tomorrow. We give thanks for those that have invited speakers to join them, and we pray that those speakers' words will move people to take action towards a world without leprosy.

**SUN:** Today is World Leprosy Day! Give thanks that we have this special day to draw attention to leprosy and those affected by the disease. We pray that all of today's activities will be a success. Please do join us online to amplify the day!

## THE LEPROSY MISSION SHOP

26 JAN–1 FEB

**Whatever you do, work at it with all your heart, as working for the Lord, not for human masters [...] It is the Lord Christ you are serving.**

Colossians 3:23–24



The Leprosy Mission Shop exists to transform the lives of people affected by leprosy by trading responsibly and in line with our Christian ethos, enabling us to:

- Raise the profile of The Leprosy Mission and recruit new supporters.
- Raise money through the sale of products, Gifts for Life and donations.

Our catalogues and website [theleprosymissionshop.com](http://theleprosymissionshop.com) allow customers to "shop for good," offering environmentally friendly Christmas cards, Fair Trade and artisan gifts that support disadvantaged groups and a range of alternative Gifts for Life that allow supporters to fund a well, shoes, chickens, goats, latrines, eye surgery and many other life-transforming options for people affected by leprosy.

**Photo:** The Leprosy Mission Shop customers can help fund school screening programmes through the School Screening Gift for Life. © Ruth Towell

### PRAYER POINTS

**MON:** The Shop was founded over 30 years ago. Please join us in thanking God for his faithfulness and for the commitment and generosity of former staff and customers.

**TUE:** Please pray for our Board, including our Board Chair –Stuart Green, and CEO –Amanda Norman, that God would give them wisdom as they guide the future direction of the Shop.

**WED:** Felicity and Judith select and develop all the 700+ products we sell at The Shop and produce our catalogues. We ask for God to bless them with creativity and insight.

**THU:** Please pray for our Digital Team, especially Aaron and Eva, as they run campaigns on social media to attract new customers who will become new supporters of the Mission.

**FRI:** We work with a third-party warehouse, Elovate, to take phone orders, store products and despatch 50,000 orders a year. Please pray for Jan and Carol as they manage this important relationship.

**SAT:** We thank God for our loyal customers and pray for Grace, our Customer Service Coordinator, as she deals with a wide range of queries on a daily basis.

**SUN:** Please pray for God's rich blessing on all our work in 2026, so that we raise more funds for the benefit of people affected by leprosy.

### SENIOR TEAM

Stuart Green – Chair of the Board  
Amanda Norman – CEO



## TIMOR-LESTE

2-8 FEB

**Whatever your hand finds to do, do it with your might; for there is no work or device or knowledge or wisdom in the grave where you are going.**

Ecclesiastes 9:10



**M**isaun Lepra Timor-Leste (ML-TL) is a local organisation working in partnership with the Ministry of Health, the Ministry of Social Solidarity and Inclusion, local churches, and Organisations of Persons with Disabilities. Together, they aim to bring healing, inclusion, and the restoration of dignity to the lives of people affected by leprosy and persons with disabilities.

ML-TL is currently running three programmes:

1. Ending Leprosy Transmission (ELETRA) in Oecusse Ambeno.
2. Preventative Health and Community Empowerment (PHACE) in Liquiçá, Atauro, and Bobonaro.
3. Interruption of Leprosy Transmission (ITML) in Liquiçá, Atauro, and Bobonaro.

**Photo:** Representatives of ML-TL and the Ministry of Social Solidarity and Inclusion hand over a food allocation for persons affected by leprosy, persons with disabilities, and people in vulnerable situations during the World Leprosy Day celebrations in 2025.

### PRAYER POINTS

**MON:** Pray that people affected by leprosy in Timor-Leste will feel valued and supported by their community, and they will be included in every activity in their society.

**TUE:** Pray for local ML-TL staff, Community Health Volunteers, Health Workers—especially those who cover remote areas in Oecusse, Liquiçá, Bobonaro, Atauro—that they would be strengthened with hope, energy, and love as they support those who are affected by leprosy and vulnerable communities.

**WED:** We pray for continued and effective cooperation between ML-TL and the Government of Timor-Leste. May the government leaders continue to support the leprosy programme with their political commitment and funding for leprosy programmes, even though the leaders have changed in the new government.

**THU:** Pray that the PEP (Post-Exposure Prophylaxis) initiative led by the Ministry of Health and WHO will be launched and implemented soon, and that the communities will accept and support the success of the programme.

**FRI:** Pray for all of ML-TL's programmes staff. May God guide them to be innovative, creative, and effective as they implement projects. May our projects have a positive impact on the lives of those within the communities.

**SAT:** Pray for courage, wisdom, and unity for the ML-TL team (Board, Staff, and Volunteers) as they earnestly commit their skills and hearts to the organisation's strategic vision and programmes.

**SUN:** Pray that God will bless the ML-TL team as they continue to seek new and sustainable funding opportunities. May the Lord open doors to generous partners, inspire innovative approaches, and guide every conversation and decision, so that all ML-TL programmes are fully resourced and able to serve those most in need.

### SENIOR TEAM

Dulce N. F. da Cunha – Board Chair  
Afliana Lisnahan – Executive Director

## NETHERLANDS

9-15 FEB

**For it is God who works in you to will and to act in order to fulfill his good purpose**

Philippians 2:13



**T**he Leprosy Mission Netherlands (Stichting Leprazending Nederland) was founded in the 1980s to support The Leprosy Mission International with funds, prayer and human resources. The office is located in Apeldoorn and has fourteen members of staff, six Board members and thirteen volunteers.

TLM Netherlands' vision is to see leprosy and rehabilitation services strengthened, enabling transformational change in the lives of people affected by leprosy in India, Bangladesh, DR Congo, Myanmar, Ethiopia, Nepal and Chad. In order to make that possible, TLM Netherlands seeks support from individual donors, churches and trust funds and organises events to get people involved with the vision and mission of The Leprosy Mission.

### PRAYER POINTS

**MON:** Please pray for the well-being of Dutch cross-cultural worker Geeske Zijp in Chad and for her team.

**TUE:** Thank God for the new Board Chair. Pray that the Board functions as an effective team and that God will guide them in overseeing the work of TLM Netherlands. Pray for wisdom and blessings for our Board as they fulfill their role.

**WED:** We thank God for our loyal supporters. Please pray that God opens new opportunities for cooperation with churches, trust funds, and businesses.

**THU:** Thank God for our incredible volunteers and ambassadors, for their dedication and hard work. Pray for peace and joy in our work, and that God continues to bless us as we work as a team.

**FRI:** Please pray for God's blessing and guidance as we continue to find new ways of working together for the future. Pray for fruitful partnerships and wisdom.

**SAT/SUN:** Pray for faith, enthusiasm, and cooperation as the journey toward zero leprosy continues—that we may keep trusting in God's provision, timing, and sovereign plan.

### SENIOR TEAM

Mr Henno Couprie – TLM Country Leader  
Mr Cor van Leeuwen – Team Leader, Administration & Back Office  
Mr Erni van Wingerden – Team Leader, Partners, Programmes & Project funding  
Mr Mark van den Berg – Team Leader, Fundraising & Communication  
Mr Ewout Suithoff – Chair of Trustees

**Photo:** Our team (staff and volunteers) was at the 'Pass the Baton' event in September 2024.

# A prayer from Congo

**From the Organisation of Persons Affected by Leprosy in Congo (OPALCO) for all persons across the world that are affected by leprosy reactions.**

**Seigneur notre DIEU,**

Nous venons devant toi avec un cœur rempli de compassion pour nos frères et sœurs qui souffrent des réactions lépreuses.

Toi qui es le DIEU de toute consolation, pose ta main puissante sur chacun d'eux dans leurs douleurs physiques et leur détresse morale.

Accorde-leur un profond soulagement.

Que ta paix les entoure et que ta présence fidèle les soutienne dans chaque moment difficile.

Père de miséricorde, nous te supplions de leur accorder de la force intérieure pour qu'il bénéficient d'un traitement adéquat loin des regards, incompréhensions et les peurs. Donne à leurs familles et à ceux qui les accompagnent la patience, la tendresse, la compréhension et la foi.

Nous croyons que rien ne t'est impossible : agis avec puissance et guéris selon ta volonté.

Que chaque personne qui souffre des réactions lépreuses ressente ton amour, ta grâce et qu'un jour, il puisse témoigner ta bonté.

Toute est possible à toi DIEU, nous croyons que ta main n'est pas courte pour nous guérir, voilà pourquoi nous prions pour toutes les personnes atteintes par la lèpre et consolés et considérés par toi à travers leurs frères et sœurs quel que soit le stade de leurs réactions lépreuses.

Quelles soient guéri au nom du Seigneur Jésus Christ.

Que DIEU restaure leur santé physique et morale au Nom puissant du Seigneur Jésus Christ.

Amen.

**Lord our GOD,**

We come before you with hearts full of compassion for our brothers and sisters who suffer from leprosy reactions.

You who are the GOD of all consolation, lay your powerful hand on each of them in their pain and distress.

Grant them profound relief.

May your peace surround them and may your faithful presence sustain them in every difficult moment.

Father of mercy, we beseech you to grant them inner strength so that they can receive appropriate treatment away from discrimination and fears. Give their families and those who care for them patience, tenderness, understanding and faith.

We believe that nothing is impossible for you: act with power and heal according to your will.

May every person who suffers from leprosy reactions feel your love, your grace, and one day bear witness to your goodness.

All is possible to you GOD, we believe that your hand is not short to heal us, this is why we pray for all people affected by leprosy who are consoled and considered by you through their brothers and sisters, whatever the stage of their leprosy reactions.

May they be healed in the name of the Lord Jesus Christ.

May GOD restore their physical health and inner wellbeing in the powerful Name of the Lord Jesus Christ.

Amen.

**And these signs will accompany those who believe: In my name they will drive out demons; they will speak in new tongues; they will pick up snakes with their hands; and when they drink deadly poison, it will not hurt them at all; they will place their hands on sick people, and they will get well.**

Mark 16:17-18



Photo credit: Tom Bradley



## ETHIOPIA

Then Peter came to Jesus and asked, "Lord, how many times shall I forgive my brother or sister who sins against me? Up to seven times?" Jesus answered, "I tell you, not seven times, but seventy-seven times."

Matthew 18:21–22



**T**LM Ethiopia has been supporting leprosy work in the country since the 1950s, despite challenges such as limited funding and weaknesses in the health system. Between 2017 and 2022, our team directly supported nearly 20,000 people, and we currently run several important projects aimed at supporting individuals affected by leprosy and disability.

The *Dare to Dream* project focuses on identifying new cases, raising awareness, and strengthening the capacity of General Health Workers, Health Extension Workers, and Leprosy Technicians to detect leprosy as early as possible. It also includes capacity building in reconstructive surgery and LPRF wound management.

The *We Are Able* project works to enhance the social and economic inclusion of people with disabilities, ensuring access to essential services and improving food security. In addition to these, TLM Ethiopia is engaged in leprosy mapping and education support for families of persons affected by leprosy, as well as ongoing research initiatives.

**Photo:** Training of ulcer treatment at ALERT Hospital.

16–22 FEB

### PRAYER POINTS

**MON:** We pray for unity among all ethnic groups in Ethiopia. May God the Father break down communication barriers between communities so that development can be ensured.

**TUE:** Father God, we pray for your support for our valued partners as they continue to act as strong global voices so that we can fight leprosy at the grassroots level. Help them to secure resources so we can run leprosy work across the world.

**WED:** May God guide persons affected by leprosy and other organisations of persons with disabilities who have been empowered to ensure sustainability at the community level.

**THU:** Father God, awaken and help government officials and decision makers so they will allocate sufficient budget for the leprosy control programme.

**FRI:** Father God, guide and help out amazing implementing partners ECDD, the Ministry of Health, and ENAPAL. May they be effective instruments for the leprosy control programme and successfully fight stigma and discrimination.

**SAT:** We bless our God's name for the kindness He has shown, as well as the impact we have seen in all our leprosy and disability projects in Ethiopia.

**SUN:** Pray for sustainable economic growth and development for our beautiful country.

### SENIOR STAFF

Beletshachew Tadesse – Country Leader  
Solomon Getahun – Programme Manager (SMT)  
Birhanu Engida – Finance and Administrative Manager (SMT)

## FUNDRAISING

For I know the plans I have for you," declares the Lord, "plans to prosper you and not to harm you, plans to give you hope and a future."

Jeremiah 29:11



**I**sn't it awe-inspiring to know that The Leprosy Mission's first fundraisers were 'recruited' in 1874, when the Pim sisters, friends of Wellesley and Alice Bailey, pledged to raise £30 a year? Their approach remains relevant to our fundraisers today: engaging supporters and raising funds through church meetings and creative pamphlets, while ensuring good stewardship of donations.

We serve an awesome God who, since 1874, has raised up the right fundraisers at the right time—spurring them on to build meaningful relationships between donors, people affected by leprosy, and His mission, founded on love and care.

Through His mission, He allows fundraisers to be his co-workers. Fundraising, therefore, is not only about raising funds to meet physical needs, but also reflecting God's love, building communities, and advancing His kingdom on earth through acts of love and justice. Praise God that through fundraising, as the famous hymn says, 'God is working His purpose out!'

**Photo:** Louise Timmins, of The Leprosy Mission Great Britain, in India showing a delighted Sunitra the donors' New Day Magazine. Sunitra loved seeing her and her dear best friend Bonita's photos.

23 FEB–1 MAR

### PRAYER POINTS

**MON:** Lord, we ask for your guidance as we seek to raise funds to defeat leprosy and transform the lives of people affected. May your wisdom inspire our efforts and lead us to the right resources and supporters. We trust in your provision and ask that your blessing be upon this, your Mission.

**TUE:** Thank you for the generous hearts of our donors. May they be blessed with abundance, and may their hearts always be stirred to support people affected by leprosy. May we always honour their gifts so that they are a testament to our supporters' love and commitment.

**WED:** Lord, may the funds we raise be used to further your Kingdom and meet the holistic needs of people affected by leprosy. May our work reflect your love and compassion, bringing dignity, hope and transformation to those we serve.

**THU:** God, we ask for your protection and blessing over our fundraising campaigns and applications to governments, institutions and foundations. May your spirit guide our actions in line with your will, and may we always give you the glory for every success.

**FRI:** Lord, help us to always approach fundraising with joy and enthusiasm. May we be filled with gratitude for the opportunity to serve and bless others. May our hearts be open to learning and sharing, and our work be a testimony to your love.

**SAT/SUN:** Lord, we specifically ask for your blessing on our goal of £60m income by the end of 2030, not for our sake but for the sake of those affected by leprosy. May you provide the funds needed to accomplish this, and may it be a source of joy and hope for those we serve.

### SENIOR LEAD

Jo-Anne Thomson – Head of Fundraising Development

## BANGLADESH: Country overview

2-8 MAR

**But I will sing about your strength, my God,  
and I will celebrate because of your love. You  
are my fortress, my place of protection in  
times of trouble.**

Psalms 59:16



**T**he Leprosy Mission Bangladesh is the largest ILEP member in Bangladesh that has consistently contributed towards zero transmission, disability and discrimination. TLMB strategically operates in 40 districts supported by 14 partners through four thematic areas, addressing the holistic needs of leprosy affected communities.

In 2026, a new journey and identity is beginning with TLMB after several years of preparation. This new identity promises a lot of positive changes that should contribute strongly towards the elimination of leprosy in Bangladesh. This year is forecast to be a busy year and so we seek prayer support from all our partners and supporters as we look to contribute towards zero leprosy.

**Photo:** Annual Country Learning meetings – A great platform for learning & unity.

### PRAYER POINTS

**MON:** Pray for the Board of Trustees as they are engaged with governance responsibility for TLM Bangladesh. May God guide their decisions.

**TUE:** Pray for a stable political situation, social harmony, and a conducive working environment amidst the national election in Bangladesh.

**WED:** Lift up Bangladesh's leaders, praying for wisdom, integrity, and commitment during this time of political transition. May their governance strengthen public health systems and promote inclusive policies that support the 2030 Zero Leprosy goal.

**THU:** The Senior Leadership Team will be engaged to ensure many changes as we continue our transition towards being governed by a Bangladesh-based Board. We pray for God's wisdom and guidance.

**FRI:** TLMB is conducting a mid-term review of its country strategy. Please pray for a well-considered plan and effective implementation to accommodate the necessary changes.

**SAT:** TLMB is looking to extend its scope for implementing SDR-PEP (Single Dose Rifampicin Post-Exposure Prophylaxis, a method of preventing leprosy) into new areas as part of efforts to interrupt transmission. Please pray for sufficient logistical and financial provision.

**SUN:** Pray for some key projects to commence along with local fundraising and advocacy initiatives towards a stronger and effective TLM Bangladesh.

### SENIOR LEADERSHIP TEAM

Dr Benedict D'Rozario – Chairman – TLMB Board of Trustees  
Mr Salomon Sumon Halder – Executive Director  
Mr Jiptha Boiragee – Head of Operations  
Mr James Taposh Adhikary – Head of Finance & Administration  
Ms Suma Reverio – Head of Human Resource & Safeguarding

## HUNGARY

9-15 MAR

**Fear the LORD, you his holy people, for those  
who fear him lack nothing.**

Psalms 34:9



**T**LM Hungary has been supporting people affected by leprosy since 1974. This work is made possible by the generosity of individuals and churches.

Because of its importance, the ASK Prayer Diary has been translated into Hungary's national language for the 19th time by a group of mainly young volunteers, and distributed both in print and online.

Our fundraising activities include regular newsletters to individual and church supporters, appeals in both print and online Christian and secular media, third-party website banner campaigns, social media, print advertisements, campaigns, leaflet inserts, presentations, and fundraising events such as runs and concerts.

Volunteers play an important role countrywide as church contacts, translators and advisors, providing online marketing and administrative support.

Besides raising funds for leprosy work, TLM Hungary's work focuses on raising awareness among the population and fostering an attitude of active solidarity.

**Photo:** Participants of a charitable running event.

### PRAYER POINTS

**MON:** For 52 years, TLM Hungary has been experiencing and rejoicing in God's faithfulness and guidance. Join us in giving thanks for this!

**TUE:** Give thanks for the dedication of Christian churches in Hungary towards the spiritual and healing work among people affected by leprosy. Give thanks for dedicated Board members representing three denominations, for pastors, priests, ministers, and church contacts who understand and have a heart for the cause of The Leprosy Mission.

**WED:** Pray today for the volunteers who selflessly give their time and energy by helping to implement TLM Hungary's activities throughout the whole country.

**THU:** Reaching out to secular society is an important area of development for TLM Hungary. Pray that the our leaflet campaigns will be effective, and that we will inspire many Hungarians who have a sensitive heart for those in need.

**FRI:** It is such a blessing to have relationships with project partners which extend beyond being administrative to being spiritual and personal. Their dedication and heartfelt approach is an encouraging example which motivates and strengthens our fundraising efforts. Pray for these relationships to continue to develop and grow.

**SAT:** Give thanks and pray for opportunities to raise awareness about TLM's work among the younger generations via presentations at schools, youth camps, festivals and fundraising events, such as charity runs or seminars.

**SUN:** Pray for the Country Leader and operational team to permanently listen to God's guidance in planning, innovating, and acting in the best interests of people affected by leprosy.

### SENIOR TEAM

Marta Risko – Country Leader  
Vacant at the time of publication – Chair of the Board



## INDIA: Country overview

16–22 MAR

**Whatever you do, work heartily, as for the Lord and not for men, knowing that from the Lord you will receive the inheritance as your reward. You are serving the Lord Christ.**

Colossians 3:23–24



As the largest, and perhaps the longest-running leprosy-focused NGO in India, The Leprosy Mission Trust India (TLMTI) attends to thousands of patients every year, trains hundreds of young people in different trades, conducts rigorous research on clinical, social, and other aspects of leprosy, and provides training on leprosy. Staying true to its motto—healing, inclusion and dignity of people affected by leprosy, other NTDs and disabilities—TLMTI is heavily invested in generating sustainable livelihoods and empowering underserved communities, especially those affected by leprosy.

With God's guidance, TLMTI has been able to support people affected by leprosy during their ailing and uncertain times, not just with treatment, but also with different interventions to make them financially independent and socially confident. By God's grace, we continue to reach out to more people to reduce leprosy cases and incidences of discrimination.

**Photo:** The TLMTI team at the International Leprosy Congress in Indonesia in 2025.

### PRAYER POINTS

**MON:** Pray that TLMTI teams and projects align themselves with the new Country Strategy 2026–30.

**TUE:** Pray that new supporters come forward to fund TLMTI projects.

**WED:** Pray that the staff can comply with frequently changing Indian statutes.

**THU:** Pray for the Audit & Risk Management teams as they audit and identify risks and give recommendations to manage risks and ensure the safety of TLMTI.

**FRI:** Pray that TLMTI can find well qualified specialists to fill various positions across the country.

**SAT:** We pray for wisdom and guidance as we strive to create a work environment that reflects our organisation's values, promoting unity, respect, and compassion among our staff and stakeholders.

**SUN:** We pray for the well-being and safety of our staff, that they may be empowered to serve with excellence, integrity, and dedication, ultimately contributing to the fulfilment of our mission.

### COUNTRY LEADER

Dr Premal Das – Executive Director

## LEPROSY AROUND THE WORLD

23–29 MAR



The Leprosy Mission works in leprosy endemic countries across Asia and Africa. However, we do not work in all leprosy endemic countries.

The World Health Organization has identified 23 countries that are priority countries for leprosy. These 23 countries account for more than 95% of new leprosy cases each year. TLM works in 11 of these countries and the others are supported by other organisations: Angola, Brazil, Comoros, Cote d'Ivoire, Egypt, Madagascar, Micronesia, the Philippines, Somalia, South Sudan, Sudan, and Tanzania.

Beyond the leprosy priority countries, our partners also work in countries such as Colombia, Senegal, Uganda, Ghana, and Thailand.

**Photo:** Representatives of The Leprosy Mission meet with Anna Paula Feminella, Brazil's Minister for the Rights of Persons with Disabilities, to discuss support for the rights of persons affected by leprosy on the international stage.

### PRAYER POINTS

**MON:** Brazil has the second highest number of cases of leprosy in the world after India. We pray today for the national Hansen's Disease Programme in Brazil and the organisation of persons affected by Hansen's Disease (MORHAN). May they be a blessing to their communities.

**TUE:** The Brazilian government has decided to pay reparations to families who were affected by a former state policy of removing children from persons affected by leprosy. Please rejoice with us for this momentous decision and give thanks that the government in Brazil is so passionate about upholding the rights of persons affected by leprosy.

**WED:** We pray for organisations of persons affected by leprosy in countries across the world. May these organisations be strengthened and have opportunities to have their voices heard and to support their members.

**THU:** We pray for the WHO's Global Leprosy Program and its Team Leader, Dr Vivek Lal. The Global Leprosy Program works with the governments of each country to ensure that national programmes work.

**FRI:** In September 2024, Jordan became the first country to receive WHO verification for eliminating leprosy. Thank you, Lord, for this great achievement. We pray for other countries that are near to achieving this.

**SAT:** There are several countries across the world that have laws that discriminate on the grounds of leprosy. We pray for efforts to repeal and amend these laws, that governments will be receptive to this idea and will understand why it is important.

**SUN:** We pray with boldness and ambition for a world with no more leprosy.





# NARESH'S STORY

**N**aresh, 32, has been a nurse at Chandkhuri Hospital in India for over a decade. However, his story of service began long before that. He grew up in the hospital compound at Faizabad, where his father—once a leprosy patient himself—was cared for and later went on to serve as a hospital worker for 30 years. His sister is also a leprosy nurse at Kothara. For Naresh, helping people affected by leprosy isn't just a job—it's a family legacy of love.

"What we saw as children touched our hearts," Naresh recalls. "The love for people who no one else wanted, the care and acceptance... no one was ever turned away. I knew I wanted to help too when I grew up."

Thanks to The Leprosy Mission, Naresh was able to complete his nursing training. "I'm so thankful for that," he says. "My dad always reminds me to thank Jesus every time I pass the hospital church."

Now, Naresh works in the outpatient department, caring for around 35 leprosy patients every day. He finds joy in cleaning and dressing ulcers—especially seeing them heal. But not all wounds are visible, rejection and loss still cut deep. "I feel so sad when I can't make their hearts better," he says. "All I can do is pray for my patients and show them they aren't worthless."

When his shift ends, Naresh walks to his small home in the hospital campus. He shares, with a laugh, that snakes and scorpions sometimes sneak in through the

**"What we saw as children touched our hearts. The love for people who no one else wanted, the care and acceptance... no one was ever turned away. I knew I wanted to help too when I grew up."**

cracks—but this doesn't overshadow his joyful personality. "I'm here because God called me to this place. I know He will meet all my needs," Naresh says.

Naresh's story is one of quiet heroism—of choosing joy, service, and faith over fear. His life reminds us that true healing often begins not in hospitals, but in reminding people how valuable they are to God and their communities, regardless of any medical condition.



## NIGERIA

30 MAR–5 APR

**Ask the Lord for rain in the springtime; it is the Lord who sends the thunderstorms. He gives showers of rain to all people, and plants of the field to everyone.**

Zechariah 10:1



**T**LM Nigeria (TLMN) works in collaboration with the Government of Nigeria to support the Federal Capital Territory, other states, and Local Governments through various interventions in the following areas: leprosy, NTDs, tuberculosis, disabilities, stigma, dermatology, mental health, research, gender mainstreaming, advocacy and communications. TLMN ministers to over 33,850 persons living with leprosy and disabilities in various communities spread across 24 states in Nigeria. Last year, Nigeria recorded over 1,500 new cases of leprosy, with children accounting for about 11 percent of those affected. This indicates that leprosy transmission remains active in the country.

**Photo:** Ameka Abbas, 39, is from Kagbo-Eroh in Akwanga, Nasarawa State. He was diagnosed with lymphatic filariasis by our team when they were searching for leprosy cases in his community. Our teams often screen for other NTDs when they are searching for leprosy cases.

### PRAYER POINTS

**MON:** Thank God for the successful launch of TLM Nigeria's new country strategy. Pray that it will inspire clear direction and bring lasting change to communities across Nigeria.

**TUE:** Ask God to strengthen TLM Nigeria's partnerships with government, churches, and donors. Pray for open doors in advocacy that will lead to better policies and inclusive services.

**WED:** Lift up individuals and families affected by leprosy, skin NTDs, and disabilities. Pray for healing, restored dignity, freedom from stigma, and for their needs to be met in hope and faith.

**THU:** Pray for TLM Nigeria's Board, staff, and volunteers. Ask God to renew their strength and grant them wisdom, courage, and a servant heart in every responsibility they carry.

**FRI:** Give thanks for the successful launch of the Proskin Dermatology Clinic and those who made it possible. Pray for open doors to sustain TLM Nigeria's mission during economic challenges.

**SAT:** Pray for all ongoing TLM Nigeria projects. Ask God to bless each effort with excellence, steady progress, and long-term impact. Pray for protection, provision, and transformation in the lives they touch.

**SUN:** Pray for the Church in Northern Nigeria and for Christians facing persecution. Ask God to keep their faith strong and to move leaders to take bold steps towards peace and stability across the nation.

**Easter blessings from Nigeria**



### SENIOR TEAM

Dr Sunday Udo – Country Leader  
Mr Pius Ogbu Sunday – Head of Programmes & Operations  
Mr Obinna Anagboso – Head of Finance/Administration  
Mr Terver Anyor – Head of Resource Mobilisation  
Mrs Omotunde Johnson – Internal Auditor

## SPAIN & SOUTH AFRICA

6–11 APR



### Spain

**T**LM Spain works to raise money for people affected by leprosy in Nigeria. For years, they have engaged with donors and churches, encouraging them to share in their compassion for persons affected by leprosy. They have no full-time staff and work solely through volunteers.

Their wonderful supporters have continued to show their love and support towards persons affected by leprosy throughout the difficult years of the pandemic and the economic challenges that have followed.

### South Africa

**T**he Leprosy Mission South Africa provides free treatment for leprosy patients, which includes disability prevention services and the distribution of leprosy medication. Health workers are trained to recognise leprosy at an early stage. Funds are raised to sustain this programme. We also run a general disability campaign called 'RampUp'.

### SENIOR TEAMS

**Spain** (all volunteers)

José Manuel Carballo  
Vivian and Samuel Calderon  
Miguel Torralba  
Jose Real

**South Africa**

Peter Laubscher – Executive Director  
Gerhard Fourie – Chairman

### PRAYER POINTS

#### Spain

**MON:** Please pray that the Lord would guide Miguel Torralba in the development of his new project and grant him wisdom in decision-making. Pray also for his daughters, Paula and Patricia – that the Lord would help them make wise personal decisions and bless them with discernment.

**TUE:** Pray that the Lord would open the door for Miguel to obtain a permanent professorship at the University of Alcalá, where he can continue his research on HIV and mycobacterial infections. Finally, please pray for his wife, that she may flourish in her work at the Faculty of Economics and in the field of microfinance.

**WED:** Pray also for Jose Carballo's children and family, that they may walk in the ways of the Lord. He hopes to retire soon, having served as a doctor with SUMA, and feels it is time to rest. Ask the Lord to give him wisdom for this new season, to understand His purpose for it, and to stir in him a holy dissatisfaction that leads to attentiveness to God's voice and guidance.

#### South Africa

**THU:** Join us in giving thanks for the good responses received to our social media campaigns and pray that this will produce a sustained increase in income.

**FRI:** Give thanks for the many opportunities we have had to train a wide range of health workers in the recognition of leprosy. Pray that this will lead to leprosy patients being diagnosed at a much earlier stage of the disease.

**SAT/SUN:** Pray that the Lord will open opportunities for many of our patients who struggle to find work and pray that our eyes will also be opened to new ways in which we can help them find employment.

**Photo:** The Reverend Lucky Kunene received his master's degree in theology from Stellenbosch University in 2025. He has served leprosy patients in the province of KwaZulu Natal with distinction for many years. He and his wife (Phumzile) are seen here at the graduation ceremony (South Africa).

## INNER WELLBEING

13-19 APR



**A**t The Leprosy Mission, we use the term 'inner wellbeing' when talking about the impact of leprosy on a person's life. This is so we can look at wellbeing as a whole, not only thinking about a person's mental health, but also about emotional, social, and spiritual health.

We recognise that the most effective way for us to support the inner wellbeing of people affected by leprosy is by working with them in partnership to identify what they find supportive, rather than what we think is supportive. To do this, we are currently developing pilot projects which will allow teams to work closely with people affected by leprosy to gather a better understanding of how leprosy impacts their inner wellbeing, and to discover what methods are most effective in helping them meet their inner wellbeing needs.

This is an exciting time at TLM as we work on the levels of support we are able to provide people affected by leprosy. This is allowing us to shift from a medical point of view towards a more holistic understanding of a person's overall wellbeing.

As you pray for the inner wellbeing of persons affected by leprosy all over the world this week, please enjoy these prayers for your own inner wellbeing.

**Photo:** The Farinciki project is a mental health project in Nigeria which helps individuals struggling with poor mental health to access the support they need. It's a project that aims to foster inner peace, wholeness and happiness for people affected by leprosy and disability in Nigeria.

### PRAYER POINTS

**MON:** Prayer for Peace of Mind: God of calm, quiet my thoughts. Still the storms within me. Let Your peace guard my heart and mind today. Amen.

**TUE:** Prayer for Strength in Anxiety: Lord, when fear overwhelms me, remind me I'm not alone. Give me courage to breathe, to trust, to keep going. Amen.

**WED:** Prayer for Clarity and Focus: God, my mind feels scattered and heavy. Bring clarity where there's confusion. Help me focus on what is true and good. Amen.

**THU:** Prayer for Rest and Restoration: Heavenly Father, I am tired in soul and mind. Please give me rest. Heal what is wounded within me. Restore my strength. Amen.

**FRI:** Prayer for Hope During Depression: Lord, in the darkness, be my light. When hope feels far, hold it for me. Remind me that joy will come again. Amen.

**SAT:** Prayer for Patience with Myself: God of grace, help me be kind to myself. When healing is slow, give me patience. Teach me to walk gently through this journey. Amen.

**SUN:** Prayer for Support and Connection: Loving God, bring people into my life who understand. Surround me with compassion and care. Help me ask for help and accept it. Amen.

## DEMOCRATIC REPUBLIC OF CONGO

20-26 APR

**So do not fear, for I am with you; do not be dismayed, for I am your God. I will strengthen you and help you; I will uphold you with my righteous right hand.**

Isaiah 41:10



**T**he Leprosy Mission has been working in Democratic Republic of Congo (DRC) for more than 50 years. DRC is the second largest country in Africa. The Leprosy Mission works in seven of DRC's 26 provinces, running more than 10 projects focused on achieving zero leprosy.

The team works very closely with OPALCO (DRC's Organisation of Persons Affected by Leprosy), the National Leprosy Programme and local churches. Around 27 staff are fully committed to contribute to defeating leprosy in DRC. They train, raise awareness, find new cases, care for people with leprosy-related disabilities, and they support people with their inner wellbeing, mental health, and with the stigma they face.

### SENIOR TEAM

Christian Bulambo Bisimwa - Country Leader  
Raphael Mulamba Mbuyamba - Head of Programmes & DSL  
Dr Jacob Kadima Kabamba - Head of Monitoring, Evaluation, Accountability and Learning & Medical Advisor  
Babeth Mbuyi Ntufua - HR, Admin & Logistics Lead  
Gervais Tsasa Lusala - Finance Manager & IT Advisor  
Didier Muhima Kamundu - Project Manager in South-Kivu  
Pierre Omumbu Otshudi - Project Manager in Kasai.

### PRAYER POINTS

**MON:** This year we will complete our move towards being governed by a Board based in DRC and we will launch our new national strategy. Let us pray that the Lord will be in control of these great changes so that his Mission continues to better serve people affected by leprosy (Proverbs 16:3).

**TUE:** People affected by leprosy are often discriminated against and rejected by their own biological families. Let us pray that members of these families will improve their knowledge about leprosy in the new phase of the TABITHA project (Ephesians 2:14).

**WED:** Last season's harvest was not great due to weather disturbances. This disrupted operations and expectations in our project in Kasai. We ask the Lord to intervene this year so that the harvest is satisfactory for the benefit of the project members (Genesis 2:15).

**THU:** Let us pray for the building of latrines and sources of clean water. This is for the protection of community members and the environment. Pray that the people we are supporting can access drinking water (Isaiah 41:17-18).

**FRI:** Let us pray that the Lord will bring lasting peace to the people of Eastern DRC, that people affected by leprosy and those living with disabilities will have access to care (Isaiah 32:17-18).

**SAT:** Let us pray for those who are working hard to help the most vulnerable despite the many obstacles, that the Lord will continue to give them the means necessary to overcome these obstacles, for it is more blessed to give than to receive (Acts 20:35).

**SUN:** Give thanks that the Lord is a faithful shepherd who cares for his children. He provides for all their needs, giving them rest, peace, and security, even in the midst of difficulties (Psalm 23:1-6).

**Photo:** A group photo taken at our annual team meeting in December 2024. TLM DRC staff, OPALCO members, local partners and representative of Supporting Countries.



## INDIA: Research and training

27 APR-3 MAY

**I searched everywhere, determined to find wisdom and to understand the reason for things.**

Ecclesiastes 7:25



**T**he Leprosy Mission Trust India (TLMTI) conducts research in different areas – laboratory, clinical, operational, and social.

The Stanley Browne Laboratory plays a vital role by conducting drug resistance studies and developing diagnostic tools for leprosy. They also study the presence of live leprosy bacteria in soil and water to determine what role they play in the transmission of leprosy.

The clinical and social research at TLMTI encompasses clinical trials, disability studies, ulcer management, and complication management through innovative approaches.

Additionally, TLMTI collaborates with like-minded organisations to foster partnerships that support their research goals. Through these diverse research efforts, TLMTI aims at advancing our understanding of leprosy, improving diagnostic and treatment approaches, enhancing disability management, and promoting social initiatives for a holistic approach to combating the impact of leprosy on individuals and communities.

**Photo:** Research underway at TLMTI's Stanley Browne Research Laboratory.

### PRAYER POINTS

**MON:** Pray for a bold, Spirit-led vision in TLMTI's research work that aligns with the country and global strategy, and that we may have breakthroughs in transmission, disability and discrimination to end leprosy.

**TUE:** Pray that God would nurture a new generation of passionate, ethical, and mission-driven individuals to carry forward our research legacy with integrity and innovation.

**WED:** Pray that all research conducted through TLMTI restores dignity, brings healing, and contributes to holistic care – spiritually, emotionally, and socially.

**THU:** Pray for divine intervention to overcome operational and systemic challenges—whether bureaucratic delays, access to data, or logistical hurdles. May every obstacle be turned into an opportunity for growth.

**FRI:** We pray that TLMTI's research will have ripple effects globally and that the findings and innovations will influence policy, inform WHO and national strategies, and become a blessing beyond borders.

**SAT:** We pray for unity, trust, and mutual respect among research teams, collaborators, and partner institutions. May the spirit of Christ-like humility and cooperation be at the centre of every working relationship.

**SUN:** We pray that research findings will not remain only in reports or journals but will be translated into real-world interventions, improving patient outcomes, reducing stigma, and bringing about systemic change.

### RESEARCH AND TRAINING LEAD

Dr Joydeepa Darlong – Head of Knowledge Management

## OUR CHRIST-CENTRED APPROACH

4-10 MAY

**For I was hungry and you gave me something to eat, I was thirsty and you gave me something to drink, I was a stranger, and you invited me in.**

Matthew 25:35



**F**rom its beginning, more than 150 years ago, The Leprosy Mission has strived to bring the consolation and comfort of the Gospel to persons, families and communities affected by leprosy. Our founder, Wellesley Bailey, knew that the 'consolation of the Gospel' was more than the word of God itself, it was also God's word in action.

Today, The Leprosy Mission seeks to bring the 'consolation of the Gospel' to those affected by leprosy in a number of different ways. These include speaking of Christ's affirming love, building transforming communities of faith, responding to the physical needs of those affected by leprosy, challenging unjust structures in society, ensuring those most marginalised are included in their communities, providing those affected by leprosy with inner well-being support and caring for and respecting the environments where persons and families affected by leprosy live.

The consolation of the Gospel – leprosy defeated, lives truly transformed!

**Photo:** The chapel at TLM's Naini Hospital in India.

### PRAYER POINTS

**MON:** We thank God for the opportunities we have to work alongside churches in many different contexts around the world, raising awareness, increasing inclusion and serving people, families and communities affected by leprosy. We pray for more opportunities like these.

**TUE:** We thank God for the opportunities to share the love of Christ with people affected by leprosy, both in word and deed, and we pray that they may encounter Jesus' transforming power through our witness.

**WED:** Today is The Leprosy Mission's Day of Prayer, during which time the whole of the organisation comes together before God. Pray for this special time of Fellowship as we seek His will and direction for the work we do in His name. Visit [leprosymission.org](http://leprosymission.org) to see how you can join us.

**THU:** Pray that the staff, volunteers and partners of TLM would be sustained by Christ during the challenges of their work. Pray for their spiritual health and giftings.

**FRI:** Please pray for the Country Leaders of our teams worldwide as they lead and direct our work. Pray for their spiritual and physical protection and that they would seek to imitate Christ in all they do.

**SAT:** Please pray for our Spiritual Ministry Working Group, who help guide the spiritual life of the Mission. Pray for this group as they meet regularly through the course of the year.

**SUN:** Since its beginning, TLM has been an organisation centred on Christ. Please pray that God will continue to sustain the Christian character of His Mission, as He has for more than 150 years.

### SPIRITUAL MINISTRY WORKING GROUP

Pedro Safrao (covenor) – Mozambique  
Anita Delhaas – Netherlands  
Raphael Mulamba Mbuyamba – DR Congo  
Saratou Barage – Niger  
Natnael Mesfin – Ethiopia  
Mahima Bantawa – Nepal  
Lok Thapa – Nepal  
Kathleen Gavin – New Zealand  
Stephen McCartney – Northern Ireland  
Brent Morgan – International Office

# Fearfully and wonderfully made

**I**t is late afternoon as I sit down to write this devotion. There is a lull in the air as I settle down to put down some of my thoughts to paper. I watch my little granddaughter, Sofia, peacefully sleeping in her cot after an afternoon of play, cuddles and endless singing of nursery rhymes by me. As I watch her sleep, I see glimpses of her mother in her, but I also see a brand-new person emerging, with her own unique characteristics. This reminds me of the words of the psalmist:

"I praise you because I am fearfully and wonderfully made; your works are wonderful; I know that full well." — Psalm 139:14

There's something deeply humbling about this verse. Nestled within King David's poetic reflection on God's intimate involvement in every detail of our lives, there is a profound truth: you are not an accident or a mistake. You are a masterpiece, crafted by the hands of the Creator of the universe.

When David says we are "fearfully" made, it evokes reverence, awe. It implies that God made us with divine care, as an artist labours over each stroke of a brush. The phrase "wonderfully made" reminds us that we are unique, set apart, and infused with purpose. Every fingerprint, every quirk of personality is part of a divine blueprint.

In a world that constantly tries to reshape us into its mould—judging our worth by appearance, achievement, or status—this truth grounds us. It says: You matter not because of what you do, but because of who made you. You are valuable not because of your perfection, but because of God's perfection in your design.

Yet many of us wrestle with self-doubt. We compare ourselves to others, chase standards we weren't meant to meet, and forget that the Creator doesn't make mistakes. Psalm 139 reveals that God was intimately involved in our formation, knitting us together in the secret place. Before anyone else saw us, God did. And He delighted in us.


Our bodies, our souls, our dreams—these are all part of that wonderful work. This verse calls us to worship—not just with lifted hands, but with a lifted perspective – to honour what God has made, starting with ourselves, and extending that honour to others. Every person around us is just as fearfully and wonderfully formed.

So, what does this mean in our daily lives? It means we can walk confidently in who we are, embracing both strengths and struggles as part of the process. It means we treat others with dignity, seeing the fingerprints of God in them too. It means we stop striving to become someone else and start trusting that God knew what He was doing when He made us.

As for the little person sound asleep in her cot, I await to see how God's plans and purposes for her unfold in His time.

## **Melonie Rajaratnam**

Grants Officer at The Leprosy Mission International



**I praise you because  
I am fearfully and  
wonderfully made;  
your works are  
wonderful; I know  
that full well**

Psalm 139:14





## ILEP AND GPZL

**This is what the Lord Almighty says: 'It may seem marvelous to the remnant of this people at that time, but will it seem marvelous to me?' declares the Lord Almighty.**

Zechariah 8:6



### International Federation of Anti-Leprosy Associations (ILEP)

ILEP is a consortium of 15 international not-for-profit organisations, including The Leprosy Mission, with a shared desire to see a world free from leprosy – a task that none of us can achieve on our own. Through the programmes of its member associations, ILEP spans 55 countries and more than 1,000 project locations worldwide. Most of the global expertise in leprosy resides in ILEP's members and their in-country partners.

### Global Partnership for Zero Leprosy (GPZL)

GPZL is a global coalition whose members represent most of the worldwide stakeholders involved in leprosy. They include national leprosy programmes, organisations of persons affected by leprosy, the pharmaceutical company Novartis which supplies anti-leprosy drugs, ILEP members such as The Leprosy Mission, and other non-profits and individuals who share our triple-zero vision: zero transmission of leprosy, zero disability, zero stigma and discrimination.

#### SENIOR TEAMS

##### ILEP

Brent Morgan – President  
Geoff Warne – CEO  
Monty Mukhier – Administrator

##### GPZL

Peter Steinmann – President  
Ritu Ghosh – Executive Director

11–17 MAY

### PRAYER POINTS

**MON:** ILEP grew in 2025 with the addition of Anesvad Foundation (Spain) as a member. Pray for a continuing desire to work together, learn from one another, and coordinate our action, especially when several ILEP members are working in the same country.

**TUE:** The eight members of the ILEP Technical Commission have an ambitious workplan to tackle some of the big technical issues in leprosy. Pray for solid achievements in the coming 12 months.

**WED:** The ILEP Advisory Panel (seven people with lived experience of leprosy) are an important link between ILEP and national organisations representing persons affected by leprosy. Pray for them as they speak out on the issues that concern them, especially around fundamental human rights.

**THU:** In 2025, Jordan was the first country validated by the World Health Organization as having eliminated leprosy (meaning no more transmission of the disease). Pray that other countries will be inspired to go the 'last mile' towards that same goal.

**FRI:** The funding environment for global health has become extra-challenging from 2025. Pray for fundraisers who are encouraging big institutions and companies to financially support projects that work towards the elimination of leprosy.

**SAT:** Leprosy research often requires immense patience and dedication. Pray that researchers will find both inspiration and fulfilment in their work. Also pray for people affected by leprosy, who are themselves carrying out research.

**SUN:** It can be challenging, in some countries, for leprosy medications to get promptly to patients. Delayed treatment can lead to disability. Please pray for the success of a GPZL project that is working to identify ways to improve the supply chain.

**Photo:** A meeting of ILEP's advisory panel in Bali, July 2025. This a panel of individuals with lived experience of leprosy who advise ILEP on its work.

## PAPUA NEW GUINEA AND BOUGAINVILLE

18–24 MAY

**Whoever is kind to the poor lends to the Lord, and he will reward them for what they have done.**

Proverbs 19:17



### Papua New Guinea

The Leprosy Mission Papua New Guinea (TLM PNG) works across both very rural and urban communities, reaching people with a cheerful heart full of God's love and compassion. The team does so through effective case finding and referrals, follow ups on leprosy cases, by raising awareness of health, providing assistance to project participants in livelihood activities, and through training and empowerment of volunteers and community leaders.

### Bougainville

TLM New Zealand works in partnership with the Autonomous Bougainville Government and the NZ Aid Programme to implement the Bougainville Healthy Communities Programme (BHCP). This is the largest project within TLM, running over 20 years.

Covering 95% of Bougainville's population, this exemplary preventative health model improves health, hygiene, and governance practices in a community-based and owned programme, with a focus on leprosy.

#### SENIOR TEAMS

##### Papua New Guinea

Natalie Smith – Country Leader  
Larsen Neayambe – Senior Programme Manager  
Dorothy Owen – Human Resources and Admin & Logistics Coordinator

##### Bougainville

Janice Badui – Senior Trainer  
Neil Toura – HR and Admin Manager  
John Koi – Monitoring and Training Manager  
Jasleen Kler – TLMNZ International Programmes Manager

### PRAYER POINTS

#### Bougainville

**MON:** Give thanks for the latest funding for the BHCP project. Pray that the team will continue to embrace the changes that have come with the latest phase of the project.

**TUE:** Pray for efforts to trial PEP (preventing leprosy through antibiotics) through BHCP. Pray that this new PEP project will be effective in preventing the spread of the disease.

**WED:** Thank God for BHCP's senior management team, who provide guidance and support to the programme. Pray for good health and protection over them as they often travel to remote locations. Pray that they will be able to nurture the relationship with the government.

#### Papua New Guinea

**THU:** Please pray for our efforts to eliminate leprosy in remote communities and to support livelihoods. Pray especially for new funding for our crab farming project.

**FRI:** Pray for TLM PNG's Climate Change Resilient Project, which is continuing into its final phase. Pray for the Lord's blessing so the Climate Change Resilient Project will be extended by the donor.

**SAT:** Pray for continued engagement and working partnership with the Department of Provincial and Local Government Affairs. This is a high-level stakeholder, so please pray that we continue positive dialogue and partnerships that lead us to eliminate leprosy, encourage healthy living and for effective collaborations.

**SUN:** Please pray for Sustainable Active Fearless Empowerment Project started in early 2026. Pray for the new communities and the new team for God's wisdom and leading.

**Photo:** The TLM PNG team with International Director, Brent Morgan, at TLM's workshops in Indonesia in July 2025.

## CHURCHES THAT ARE FIGHTING LEPROSY

25-31 MAY



All across the world, churches are following in the footsteps of Jesus as they work to defeat leprosy and transform the lives of those affected by the disease.

Some of these churches are supporting our work in leprosy endemic countries through referrals and efforts towards social inclusion, making our community interventions sustainable and impactful. Other churches are supporting this work through generous donations and prayer.

Churches are one of our most important partners and are integral to our work. In the aftermath of the 2025 earthquake in Myanmar, it was churches that worked with us to provide a lifeline to communities that were not being reached by humanitarian efforts. In Bangladesh, churches are reaching out to isolated villages in the tea plantations, in DR Congo ulcer patients are treated at low-cost, church-managed hospitals, and in Mozambique churches are supporting awareness and inclusion. Churches are playing a role across all of our countries.

We are grateful for all of these church partners, who together are the body of Christ, serving persons affected by leprosy in the modern day.

**Photo:** Even as they supported their communities, churches were facing their own crises after the 2025 earthquake in Myanmar. This Baptist church, which is over 100 years old, needed to be demolished after the damage caused by the earthquake.

### PRAYER POINTS

**MON:** We give thanks for the example set by Jesus during his earthly life. How he treated persons affected by leprosy has inspired two millennia of his followers, right up to today. Praise the Lord!

**TUE:** We give thanks for the way that churches in Myanmar responded to the crisis following the earthquake. We are grateful that our ongoing relationship with these churches allowed for swift action to support communities. Praise the Lord!

**WED:** Please pray for all the churches that work to support persons affected by leprosy in their communities. We pray that they will be renewed in their motivation to care for these members of their communities. We pray that their work will have an impact and transform lives.

**THU:** We pray today for all the teams in The Leprosy Mission who are the links to the churches with whom we partner. We pray that they will be able to respond to the needs of our church partners and support them so they can support persons affected by leprosy.

**FRI:** Please join us in prayer that more churches will be moved to support the work to defeat leprosy. We pray that the church will be a key part of the generation that will defeat leprosy.

**SAT:** We pray thanks for the other faith communities that support the work to defeat leprosy. In many leprosy-endemic communities, non-Christian faiths are the majority religion, and their support is invaluable, as they use their influence to make a difference.

**SUN:** Give thanks with us for all the churches that will pray today for persons affected by leprosy and give money towards the fight to end this disease. This is a gift that honours God.

## TLM'S INTERNATIONAL OFFICE

1-7 JUN



The Leprosy Mission's International Office does not act as a head office, but rather as a coordinating office.

We support all of TLM's country teams across a variety of disciplines, including programmes, strategy, finance, HR, advocacy, monitoring, research, fundraising, and communications. Our team is also responsible for coordinating TLM's global-level meetings.

Our team is largely based in Brentford, UK, but we also have colleagues across the world, in Asia, Europe, and South America.

**Photo:** Members of the International Office at TLM's annual workshops in July 2025

### SENIOR TEAM

Brent Morgan – International Director  
Clara Volpi – Head of Operations  
Jannine Ebnoso – Head of Knowledge Management & Learning  
Damaris Villanueva – Head of People & Safeguarding  
Jo-Anne Thomson – Head of Fundraising Development  
Gladstone Worthington – Head of Finance

### PRAYER POINTS

**MON:** Pray with us today for our finance team, who are responsible for receiving and distributing funds across the world. We give thanks for their cheerful approach to their work and pray that their work will be safe from fraud and the work of financial criminals.

**TUE:** Today we pray for our HR and people team. They support our different countries with good practice in HR and safeguarding, as well as coordinating training and development for our global teams. We pray that HR and safeguarding work at TLM will be stronger thanks to these efforts.

**WED:** Please pray with us for our programmes team, who support our global teams with developing and monitoring both projects and strategies. We pray that through their support, our projects will be impactful and will transform lives.

**THU:** We pray today for our fundraising team, who work alongside our fundraising countries to strengthen their work and to seek institutional funding opportunities. We pray that TLM will reach its ambitious funding targets so that we can invest as much money as possible into a world without leprosy.

**FRI:** Please pray with us today for those members of our team that support innovation and research within The Leprosy Mission. We pray that their work will help to push us towards new breakthroughs and new opportunities to collaborate.

**SAT:** Today we pray for those who present the public face of The Leprosy Mission through our office. Our advocacy and communications teams represent TLM both online and at meetings and conferences. We pray that their work will be engaging and persuasive, inspiring people to engage with our work.

**SUN:** We pray today for our secretariat team, who are essential cogs in the machinery of The Leprosy Mission, ensuring our work and our meetings flow smoothly. We give thanks for their efforts and pray that God will help them overcome the many logistical obstacles that make their work challenging.





# YAHRAH'S STORY

In a small village in Nigeria, nine-year-old Yahrah was once seen as different. When she was four, mysterious patches had appeared on her skin, and for years, her family tried everything—from herbal medicine to prayers—thinking it was a spiritual illness. But nothing helped. Her skin worsened, and her confidence faded. Yahrah started noticing that her friends didn't want to play with her anymore and she started to feel lonely.

Everything changed when The Leprosy Mission Nigeria (TLMN) visited her community. After screening, she was diagnosed with leprosy—a diagnosis that finally gave her a path to healing. Her father remembers: “She didn't look like a human being... her skin had changed so much. But the drugs changed everything”. TLMN gave Yahrah free medication and support. Her skin began to heal. Her father, despite the hardship of missing work to take her to appointments, stood by her side: “it is quite difficult for us at the moment because Yahrah finds it difficult to do anything without my presence... but what will I do; I am her father, and I have to be there for her”.

Emotionally, Yahrah still battles the scars left by bullying and isolation. She keeps to herself and speaks little, but she has started reconnecting with old friends and making new ones: “people do not treat me nor my family differently from others after the treatment I received from The Leprosy Mission”, Yahrah said.

**“She didn't look like a human being... her skin had changed so much. But the drugs changed everything”**

Her family has also found relief. Her father shared, “so, at some point, we did tell her older brother and her peers, who tended to be insulting of Yahrah's skin condition, to desist from such acts as the challenge she was passing through could affect any person... Now, they understand she was just sick—and she's getting better”.

Now Yahrah can chase her dreams of going to school again and become a teacher, or maybe a doctor to help others, and even become a mum— a possibility that was once shadowed by the isolation she experienced but now seems a distant memory. Thanks to TLMN, Yahrah is healing—not just physically, but emotionally and socially. Her journey reminds us that there is hope for those going through the most painful paths.



## INDIA: Advocacy and communications

8-14 JUN

**But let justice roll on like a river, righteousness like a never-failing stream!**

Amos 5:24



The Advocacy & Communications team works in tandem with the organisational goals, especially achieving zero transmission, zero disability and zero discrimination. To that end, the team partners with other teams and projects within The Leprosy Mission Trust India (TLMTI), as well as external stakeholders, to develop new ideas and to implement Information, Education, and Communication campaigns. Through this work they contribute to the building of leprosy awareness in endemic areas and among underserved communities.

We work closely with the state and central government to repeal discriminatory laws and raise awareness among duty bearers and the general community on how stigma and discrimination create barriers in achieving a leprosy-free India.

The Advocacy & Communications team represents TLMTI in domestic and international events and contributes thought leadership to discourses and literature on leprosy and other disabilities. They also undertake training programmes on the social causes and consequences of leprosy for individuals and organisations so that we can create an enabling environment for persons affected by leprosy.

### ADVOCACY AND COMMUNICATION LEAD

Nikita Sarah – Head of Advocacy & Communications

### PRAYER POINTS

**MON:** We pray for The Leprosy Mission Trust India as it takes on the mantle of coordinating the leprosy NGOs (ILEP members, see p.34) in India for the next three years. Grant us wisdom as we work toward signing the Memorandum of Understanding with the Government and elevating the impact of ILEP.

**TUE:** Heavenly Father, we pray for your wisdom as we embark on establishing a national-level federation for people affected by leprosy. Grant that this federation becomes a powerful and unified platform where the voices of people affected by leprosy are amplified and their rights championed effectively.

**WED:** Lord, we seek your blessings as we look to equip ourselves for expanded advocacy in 2026. Grant us the necessary resources, both financial and human, to effectively raise awareness and champion the rights of people affected by leprosy.

**THU:** Pray for collaborations with stakeholders, including other NGOs, academic institutions, and community leaders, that will lead to increased support and accelerated progress towards the Mission's goals.

**FRI:** We pray for your miraculous enablement as we plan and execute national and state-level events throughout 2026. Grant us wisdom, creativity, and resources to capture the attention of the public and foster solidarity among our supporters.

**SAT:** Lord, grant discernment and favour with government officials as they review and repeal discriminatory laws. May we see significant progress in these efforts, paving the way for inclusive legislation and policies that create a more just society.

**SUN:** We pray for your continued healing touch on those affected by leprosy. May these advocacy efforts in 2026 bring renewed hope, restored dignity, and a deeper sense of community and belonging for every individual affected by this disease.

**Photo:** Meeting with the Chief Minister of Puducherry to discuss the repealing of discriminatory laws.

## MOZAMBIQUE

15-21 JUN

**Unless the Lord builds the house, the builders labour in vain. Unless the Lord watches over the city, the guards stand watch in vain.**

Psalms 127:1



The Leprosy Mission Mozambique is committed to combatting leprosy and improving the living conditions of people affected by leprosy and those with disabilities.

In 2008, leprosy was declared as eliminated in Mozambique, but this was based on old criteria and the country is still considered endemic, with approximately 3,000 new cases of leprosy recorded annually and over 10% among children. TLMM works with other partners to support the national leprosy control programme by training health personnel to diagnose, treat, and monitor leprosy patients. At the community level, TLMM supports the creation of community structures such as self-care groups, savings groups, leprosy committees, and others that work on preventing disabilities, income-generating activities, social inclusion of people affected by leprosy and people with disabilities, and empowering communities to become resilient to climate change. Collaboration with communities, churches, OPLs, government, as well as remote communities, has proven key to the programme's success in Mozambique.

### SENIOR TEAM

Pedro Safrão – Country Leader  
Jacinta Marqueza – Monitoring, Evaluation and Learning Coordinator  
Belarmino Reich – Community & Partnerships Project Manager  
Armindo Jorge – Leprosy Control Project Manager  
Culaire Luis – Human Resource Coordinator

### PRAYER POINTS

**MON:** We pray for the wellbeing of people affected by leprosy, their families, children, and the most vulnerable. We pray that their basic needs may be met and that they may find hope for the future.

**TUE:** We pray that God will mediate in the process of building new partnerships with the district leaders in the new district of Namarroi, where partnerships are still being built.

**WED:** We pray that cooperatives may become an authentic, lived reality and that they may support community members with their finances.

**THU:** We pray for peace and security in Mozambique and for the protection of all citizens, especially those already living in vulnerable situations, such as those affected by leprosy.

**FRI:** We thank God for the new Olikanassa project, launched in September 2025, funded by Irish Aid. We pray that this project will contribute significantly to overcoming leprosy, restoring dignity, and transforming lives in the communities where leprosy exists. Through this intervention, may TLM Mozambique receive a positive evaluation from the donor, opening doors to future collaboration opportunities.

**SAT:** We pray for the empowerment of young people and local leaders as community correspondents. May they tell authentic stories of transformation and impact. Pray for wisdom to communicate with sensitivity and inclusion.

**SUN:** We want to thank God for opening doors, and for wisdom and guidance in implementing our work in Mozambique. We also remember our traditional supporting countries and others who have joined us in this mission, commissioned by the Lord Jesus Christ, to defeat leprosy and transform lives.

**Photo:** Photo of TLM Mozambique team and partners during the annual team meetings in February 2025.



# NEPAL: Anandaban Hospital, Research and Training Centre

22-28 JUN

Enlarge the place of your tent, stretch your tent curtains wide, do not hold back; lengthen your cords, strengthen your stakes.

Isaiah 54:2



Anandaban Hospital is well renowned for leprosy referral services in Nepal, providing holistic care and world class reconstructive surgeries. The hospital caters to the general public in its outpatient department and is renowned for its dermatology and orthopaedic services. However, after a massive landslide in September 2024, it has been a challenge to find enough safe spaces on the hospital campus where we can provide health services.

Research & Training Centres have been relocated to a rented house in the city, near the Patan Clinic. But since all these components are interconnected, it is important for TLM Nepal to find the right space to provide quality leprosy services.

## SENIOR TEAM

- Dr Kaleb Budha – Health Services Director
- Dr Indra Napit – Research Director
- Dr Mahesh Shah – Medical Director
- Dr Pradip Sapkota – Medical Superintendent
- Mr Sher Gurung – Hospital Administrator
- Mrs Mahima Bantawa – Nursing Superintendent
- Dr Jivan Shakya – Head of Mycobacterial Research Laboratories

## PRAYER POINTS

**MON:** Anandaban Hospital is a divine place of healing, where both people affected by leprosy and general patients receive holistic care. The hospital serves as a vital health centre for communities in marginal and underprivileged situations, ensuring access to quality treatment and hope for many.

**TUE:** In September 2024, devastating landslides struck the Anandaban Hospital campus, drastically altering its landscape and disrupting normal operations. Several buildings were damaged, including those used to accommodate patients, the Self-Care Unit, the Training and Technical Support Centre and the Mycobacterial Research Lab. Pray that continued services and leprosy operations can be provided from a safe and sustainable place.

**WED:** TLM Nepal's training and technical support centre supports the Nepal Government by training community health volunteers and health workers to suspect, diagnose and treat leprosy. Pray for strong coordination with the Government of Nepal and for the sustainability of our training programmes.

**THU:** The number of people with leprosy-related disabilities are on the rise at Anandaban Hospital. Pray that our medical and supportive staff can continue to be good Samaritans and provide effective and compassionate care at the hospital.

**FRI:** The planned construction of a new research building within the hospital premises has been cancelled following expert advice after the landslide. Pray that we will be able to find the right land for the lab so that crucial leprosy research can be carried out in a secure environment.

**SAT/SUN:** Please pray for the leadership team of Anandaban Hospital. May God lead the team with servant hearts as they serve those in need.

Photo: The Main Office at Anandaban Hospital.

# DENMARK

29 JUN-5 JUL

As Jesus was walking into a village, ten men who had leprosy met him. They stood at a distance and called out in a loud voice, "Jesus, master, have pity on us! When he saw them, he said," Go, show yourselves to the priests." And as they went, they were cleansed.

Luke 1: 12-15



The Danish Santal Mission began the leprosy work at Nilphamari, in the Northern part of Bangladesh, in 1977. A 100-bed hospital was established: Danish-Bangladesh-Leprosy-Mission (DBLM). Many patients have received medical and surgical treatment through DBLM since the 1970s and many more patients have received treatment from community clinics across a large area of Northern Bangladesh.

As well as supporting DBLM Hospital, TLM Denmark has received funds from the Danish Government for project work in Bangladesh and Ethiopia.

We are grateful to God for his help and blessing in our work. It is our hope and prayer that one day this disease will be eradicated. All glory to God.

## PRAYER POINTS

**MON:** Pray for the TLM Denmark Board, for wisdom to make the right decisions for the benefit of leprosy patients, people with disabilities, and vulnerable individuals.

**TUE:** Pray for the women and children who find shelter at the Hagar Centre in Bangladesh. Pray that they will have a positive time there and will leave feeling stronger and more hopeful. Pray for the Centre's staff, that they will be able to support their clients to the best of their ability.

**WED:** Pray for the projects taking place in the north of Bangladesh. Pray for the success of the savings groups and that persons with disabilities will understand and access their rights.

**THU:** Pray for collaboration within TLM's Nordic Hub, so that we may strengthen our Nordic ties, inspire each other, and assist in the expansion of work in TLM's Nordic countries.

**FRI:** Pray for DBLM Hospital, for the patients and their families and for the staff. Pray for the management team at the Dhaka office, that they may be guided by God.

**SAT:** Pray for our donors in Denmark: supporting agencies CISU and CKU. Pray that our collaboration may be strengthened and that there may be awareness of the needs of leprosy patients in Bangladesh and Ethiopia. Pray for our work in Ethiopia, which is a new country for us to support.

**SUN:** Pray for Christians in Bangladesh, that they may avoid persecution and that they may care for their brothers and sisters with leprosy and other disabilities. Pray that collaboration between religions in Bangladesh may grow stronger.

Photo: A patient who has impairments in his hands and feet caused by leprosy has received a bicycle, so he can get around.

## CHAD

6-12 JUL

**The King will reply: 'Truly I tell you, whatever you did for one of the least of these brothers and sisters of mine, you did for me'.**

Matthew 25:40



**T**LM Chad supports the leprosy work in the Guéra and Salamat provinces, in collaboration with the National Leprosy Programme of the Republic of Chad and its ILEP-partner, Fondation Raoul Follereau. It also provides technical support to active case finding activities in refugee camps towards the North East of the country, where over a million Sudanese have settled having fled the war in Sudan.

Training, supervision and disability prevention are important aspects of the work, as well as the provision of orthopaedic appliances and walking aids (adapted shoes, crutches, prostheses, tricycles etc.) These tools promote mobility and active participation in community life for people affected by leprosy and disability.

To support the inclusion of persons affected by leprosy and disabilities, TLM Chad implements projects for children with physical disability as well as for children and adults with mental health problems. TLM Chad promotes disability rights and has taken on board several staff living with disability.

### SENIOR TEAM

Pastor Hissein Dagache – Chairman TLM Chad Support Committee  
Bunmi Oluloto – Country Leader  
Geeske Zijp – Programme Manager  
Marc Djibrine Victor – Admin and Finance Officer  
Djibrine Arabi – Admin Assistant and HR Officer  
Abdel Djelil Hassane – Driver, mechanic  
Ahmat Abderaman – Project Manager CBR Guera  
Mahamat Seid – Project Manager CBR Salamat

### PRAYER POINTS

**MON:** The Republic of Chad is a large, sub-Saharan African country with a harsh climate and difficult road conditions. Please pray for the safety and security of the supervisors who travel to encourage health centre nurses to spread awareness and find new leprosy cases in the local communities.

**TUE:** Disability prevention is an important aspect of TLM Chad's work. Pray for the provision of assistive devices (adapted shoes, prosthesis, crutches, bicycles, tricycles, and sometimes a donkey) that promote mobility and enable people to return to school, to work, and to socialise.

**WED:** Inclusion of persons with disabilities is an important part of TLM Chad's work. Pray for our community projects, that they will help children and young adults reintegrate within their communities.

**THU:** Pray for the physiotherapists of Mongo and Am Timan hospitals, as they take care of patients experiencing pain and disability. Physiotherapy is still new in Salamat, and many more patients need physiotherapy to improve their physical health and function. May God help us reach as many as possible.

**FRI:** Mental health is a problem in a country affected by disease and poverty. Pray for the student who has studied mental health in Cotonou (Benin) and is expected to set up a mental health programme in the Guéra on his return in early 2026.

**SAT:** Give thanks for the organisations of persons with disabilities in Guéra that are attending to the nutritional needs of the community around them during the rainy season, the hardest period of the year. Give thanks that they are able to integrate the wider community into their efforts.

**SUN:** Pray for the staff with disabilities who are actively contributing to TLM Chad's projects. Pray that their zeal and courage may invite others to come forward and join in the strife for dignity and fullness of life for persons affected by leprosy and disability.

**Photo:** Staff and support committee meeting.

## FRANCE

13-19 JUL

**Be joyful in hope, patient in affliction, faithful in prayer.**

Romans 12:12



**T**he TLM France team primarily targets a Christian audience. We firmly believe that churches are particularly sensitive to the plight of people affected by leprosy. Our mission is to inform and mobilise the French public to actively contribute to the elimination of this disease.

Our team, made up of two part-time employees and dedicated volunteers, focuses mainly on improving our communication channels, including our website – missionlepre.org – and our social media.

However, we have noticed a decrease in invitations from churches compared to the past. Despite this, we persist in our efforts to raise awareness of the cause of those affected by leprosy. We regularly organise exhibitions to share their stories and raise funds to support our initiatives.

**Photo:** Pascal Machefer, Country Leader of TLM France.

### PRAYER POINTS

**MON:** Amidst recent political turmoil in France, we pray that the French people will be blessed with wise leaders, good government and just laws, which particularly serve the most vulnerable in France and elsewhere in the world.

**TUE:** Let us pray that the people of France will see the needs across the rest of the globe and that The Leprosy Mission France gains increased recognition and attracts new supporters.

**WED:** We are grateful for the support of Aaron Scott from TLM's Shop. He contributed his skills to help us revitalise our digital communications. We pray that younger generations become aware of the plight of those affected by leprosy through this new approach.

**THU:** Thank you, Lord, for our Francophone Hub (Belgium, France, Switzerland), which allows us to share resources and encourage each other in our work.

**FRI:** Pray that the staff, Board members, and volunteers of TLM France can visit churches to present the work of TLM.

**SAT/SUN:** Thank you, Lord, for the two new members who have joined our Board of Directors. Pray for them as they take on this new challenge.

### SENIOR TEAM

Théo Reiss – Chairman  
Pascal Machefer – Country leader  
Carine Fotso – Secretary



## INDONESIA

20-26 JUL



Indonesia has the third highest number of leprosy cases in the world. The Leprosy Mission works through partnership with Yayasan NLR Indonesia on three projects on the island of Java and one on the island of Sumatra. Funds come from TLM in Australia, New Zealand, the Netherlands, and Belgium.

Phase II of the PEPCOM project—funded by supporters from New Zealand and the Netherlands—will continue implementing the combined PEPCOM approach. This phase will add significant components focused on advocating for leprosy-related policies and programmes, as well as supporting persons affected by leprosy in accessing their rights and opportunities in Indramayu District, Indonesia.

TLM Australia funded two projects: The Leprosy Friendly Village and the Urban Leprosy Project, that have just been completed. These two approaches have worked to reduce stigma and discrimination in rural contexts and increased the number of people diagnosed and treated for leprosy through public and private health services. The two projects have now been combined into the 'Comprehensive Zero Leprosy Project' that will be based in the district of Karawang, to the east of Jakarta.

On Sumatra, TLM Netherlands works to strengthen the local health system by training a reconstructive surgeon and local health staff. Reconstructive surgery is performed as part of the training, and aftercare is given by trained members of the local Organisation of People affected by Leprosy (OPL), PerMaTa.

**Photo:** A child receiving a dose of the antibiotic Rifampicin (known as SDR-PEP, a method of preventing leprosy). The PEP trial could bring a breakthrough in reducing the risk of leprosy transmission across our project areas.

### PRAYER POINTS

**MON:** Please pray for the team at the Indramayu District Health Office. We pray that they will adopt the national leprosy elimination policy through programmes with adequate budgets that can interrupt leprosy transmission.

**TUE:** Pray for a growth of confidence and independence in people affected by leprosy who are part of Organisations for People Affected by Leprosy (OPLs). May they become role models for others as everyone sees them grow.

**WED:** Pray that the OPLs can further improve their capacity and organisational skills, becoming stronger in order to fight the stigma of leprosy.

**THU:** Pray that, as people know more, fear of leprosy will decrease. Pray that this will lead to a marked reduction in the stigma of leprosy in communities.

**FRI:** Please pray for the activities planned in the phase two of the PEPCOM Project may be implemented smoothly in the Indramayu District. Pray that all the workplans may be completed in a timely manner with the cooperation and participation of all the stakeholders.

**SAT:** Pray that all Leprosy Health Workers find motivation and enthusiasm as they perform their duties wholeheartedly, and that the capacity of the Leprosy Control Programme keeps increasing.

**SUN:** Give thanks for all the staff of Yayasan NLR Indonesia. Pray a blessing on them for good health and wisdom from God in order to continue supporting people affected by leprosy.

## NEW ZEALAND

27 JUL-2 AUG

**May the God of hope fill you with all joy and peace as you trust in Him, so that you may overflow with hope by the power of the Holy Spirit.**

Romans 15:13



The Leprosy Mission New Zealand (TLMNZ) is deeply grateful for the unwavering love and support of our dedicated community. Our supporters not only sustain our mission through financial and prayerful contributions, but also volunteer their time and advocate for us in churches and community groups.

Over 12,000 New Zealanders actively back our efforts, and we strive to engage even more to achieve our global goal of zero leprosy transmission by 2035. Thanks to our supporters' commitment, we transform lives and bring hope to families affected by leprosy in countries like Bangladesh, Papua New Guinea, Bougainville, DR Congo, Ethiopia, India, Indonesia, Nepal, and Timor-Leste. TLMNZ collaborates with The New Zealand Aid Programme (Ministry of Foreign Affairs and Trade), the Autonomous Bougainville Government, NLR (a Dutch leprosy NGO), and local grassroots organisations. Together, we are curing, caring for, and restoring those affected by leprosy to full and healthy lives.

**Photo:** Gillian Whitley (TLMNZ Executive Director) and Jasleen Kler (TLMNZ International Programmes Manager) with The Leprosy Mission team in Bougainville & government officials of the Autonomous Bougainville Government.

### PRAYER POINTS

**MON:** Praise God for new supporters as they strengthen our commitment to work together in hope, love, and purpose. May their support be a beacon of compassion that brings healing and lasting change for people affected by leprosy as we pursue the audacious goal of No Child with Leprosy by 2035.

**TUE:** Pray for the strategic integration of the Bougainville Healthy Communities Programme into the region's Department of Health. We ask for continued support from the Bougainville Government so this programme can build healthy, empowered, and resilient communities.

**WED:** Give thanks for the support of the Kiribati Government for the PHACE programme. Pray for ongoing collaboration between New Zealand and Kiribati officials to ensure successful project implementation.

**THU:** Give thanks for the local Climate Change Committee members in Papua New Guinea, especially those affected by leprosy who are helping lead change at the community level. Pray that their voices will be heard as they advocate for those most impacted by climate change.

**FRI:** Give thanks for our valued partnership with the New Zealand Government's aid programme. May this partnership be strengthened, built on mutual respect, and a shared mission to uplift communities in need in the Pacific.

**SAT/SUN:** Connecting young people to the Mission's work is something we do with great joy. As part of the Youth Advocates Scholarship, each year we take a group of university students to learn and witness the Mission work firsthand in Nepal. Please pray for their fundraising effort this year as they advocate for, and bring hope to, those affected by leprosy.

### SENIOR TEAM

Gillian Whitley – TLM Country Leader  
Martin Malkaney – Finance Manager  
Leanne Ryburn – Marketing & Fundraising Manager  
Jasleen Kler – International Programmes Manager  
Andre Stuart – Board Chair

## RESEARCH

3-9 AUG

**In all your ways acknowledge him, and he will make straight your paths**

Proverbs 3:6



**O**ur main research programmes are in Bangladesh, India, and Nepal, with a growing initiative in Nigeria and Ethiopia. Our three laboratories (Stanley Browne Laboratories in Delhi, India; Mycobacterial Research Laboratories in Kathmandu, Nepal; and DBLM Laboratory in Nilphamari, Bangladesh) support our basic, clinical and operational research.

Our research priorities are:

1. Diagnostic tools – for both leprosy and leprosy reactions.
2. Post-exposure prophylaxis (PEP) – antibiotics to prevent leprosy developing in contacts of newly diagnosed individuals.
3. New drugs for leprosy and leprosy reactions (inflammatory responses in the skin, nerves, eyes, and other parts of the body).

We partner with universities and research groups nationally and internationally to conduct basic, clinical, operational, and social research.

**Photo:** The Leprosy Mission staff at the International Leprosy Congress 2025.

### PRAYER POINTS

**MON:** Pray for our laboratories in Bangladesh, India and Nepal as they work with other laboratories and organisations nationally and internationally to develop field-friendly diagnostic tests for leprosy.

**TUE:** Whatever we might develop in a laboratory needs to be tested in the field – so pray for our field teams in several countries across Asia and Africa that are testing the diagnostic tests and others tests in different field conditions.

**WED:** Leprosy reactions are the main cause of disability for those affected. Researchers worldwide are looking for better tests to catch reactions early and for drugs that work better, with fewer side effects. Pray for their success.

**THU:** Stigma and discrimination remain an issue for persons affected by leprosy. Pray for the study in Niger aimed at understanding and reducing stigma among health workers. Pray the findings help change attitudes in Niger and beyond.

**FRI:** Leprosy can affect mental health, not just physical health. Pray for our researchers in Ethiopia, India, Nepal and Nigeria, as they seek ways to improve mental health in persons affected.

**SAT:** Pray for our three research laboratories as they ensure that they meet the standards expected. Pray for enough scientists to join the labs, and for the right equipment to be in place so that we can maintain our registration.

**SUN:** Publishing scientific papers and presenting at scientific and other conferences is key to disseminating our research findings. Pray for those researchers presenting at international meetings during the course of this year.

### RESEARCH LEADS

Rishad C Robin – Bangladesh  
Marekegn Habtamu – Ethiopia  
Joydeepa Darlong – India  
Indra Napit – Nepal  
Paul Tsaku – Nigeria  
Bahadır Celiktemur – Great Britain

## ORGANISATIONS OF PERSONS AFFECTED BY LEPROSY

10-16 AUG



**T**he Leprosy Mission is an organisation that supports people affected by leprosy. We also partner with many representative organisations that are led by and made up of individuals who have experienced leprosy themselves.

Organisations of Persons Affected by Leprosy are the most important partners in our work. They provide crucial insights and access to communities, allowing our work to be more impactful. They are powerful advocates and project implementers. When crises hit, they are a lifeline for their communities, facilitating access to emergency resources, such as finances, food, and lifesaving information.

In the years to come, The Leprosy Mission will be working to strengthen these organisations and our relationship with them, so that they can be best placed to support their members.

### PRAYER POINTS

**MON:** Please pray for the leaders of these organisations, that they will have the confidence, opportunities, and skills to lead effectively.

**TUE:** We pray today for The Leprosy Mission's efforts to strengthen these organisations. Please pray for the work of our global-level Task Force, which is working specifically on this issue. May their work be guided both by God and by the organisations they are working with.

**WED:** In 2025, the third Global Forum of Organisations of Persons Affected by Leprosy was hosted in Indonesia. We pray for the outcomes of that Forum, including the commitments these organisations made and the recommendations they offered to governments and NGOs. May these outcomes lead to real and tangible change in the lives of persons affected by leprosy.

**THU:** In a mirroring of The Leprosy Mission's prayer (see back page), we pray that these organisations may never lack the staff or the means to carry on their work.

**FRI:** We pray for the work these organisations do as advocates. We pray that decision makers will consider their voices with the seriousness they deserve and will be moved to take action.

**SAT:** Today we pray specifically for those Organisations of Persons Affected by Leprosy that are newer and smaller, that they will have an environment in which they can grow and thrive.

**SUN:** We pray that these Organisations of Persons Affected by Leprosy will always be a blessing to their members and will have the means and the opportunities to make life better for persons affected by leprosy.

**Photo:** The third Global Forum of Organisations of Persons Affected by Leprosy in Indonesia, 2025 (the previous two were in 2019 and 2022).



## BELGIUM

**Blessed be the God and Father of our Lord Jesus Christ, who has blessed us with every spiritual blessing in the heavenly places in Christ, just as He chose us in Him before the foundation of the world, that we should be holy and without blame before Him in love.**

Ephesians 1: 3-5



**T**LM Belgium is a small but grateful organisation made up entirely of Christian volunteers. We communicate in three languages—English, French, and Dutch—because they are spoken in different parts of the country.

Another leprosy organisation active in Belgium is the Damien Foundation, with its head office in Brussels. It is well known throughout Belgium and has a strong presence in historically Catholic communities.

TLM Belgium focuses on engaging Protestant churches and is Chaired by Francis Van De Walle, a retiree who gives regular presentations about TLM's work in churches. He is deeply devoted—just like the 91-year-old treasurer and the other dedicated Board members who carry out the work of TLM Belgium. Paulin Songolea Bakalanía is the Country Leader.

### TLM BELGIUM BOARD

Francis Van De Walle – Chair  
Marijke Sajet – Vice-Chair  
Paulin Songolea Bakalanía – Country Leader  
Renée Simons-Hugaerts – Treasurer  
Norbert Ngila Bampunga – Secretary  
Irène Masika Katselewa – Trustee  
Rev Tünde Boelens-Csákány – Trustee

17-23 AUG

### PRAYER POINTS

**MON:** Dear God, we thank you that you know each one of us by name and understand our deepest desires, wherever we are in this world. We praise you that we belong to you and that you care for everyone!

**TUE:** Lord, thank you for the love that you have shown us through our brothers and sisters in TLM. We are grateful for those who work serving people affected by leprosy or by other sicknesses. Give them physical and spiritual strength through your Holy Spirit!

**WED:** Heavenly Father, you have called us to live in a loving relationship with you and to show your love to all people. Open our eyes to see you also in the dark days, give each of us strength to fulfil your special call.

**THU:** Almighty God, we pray together for your protection over those who are in danger because of war or aggression around them. Please help them in times of great sorrow; pour out your miraculous power on the lives of those who need healing and reconciliation. In Jesus' name, amen.

**FRI:** We pray that Christ will live in our hearts by faith, and that through the Holy Spirit, we may all be strong from within. Give us the Spirit of love and peace that surpasses all understanding, so that our lives may be rooted and built in love.

**SAT:** Lord of Grace, we pray that researchers may find the right vaccination that would stop leprosy. We ask that you lead us in all countries to work together for the benefit of all people and your glory!

**SUN:** Praise be to you, Lord, for all the good things you have done—for the many lives that have been changed, healed, and saved! We give praise for your resurrection and for the everlasting life you grant to each one of us. Bless the work of TLM everywhere; we rejoice in you. Amen!

**Photo:** Active Board member Rev Tünde Boelens-Csákány at a Christmas Fundraising booth in the VPKB Protestant Church Brussels.

## SRI LANKA

**Then your light will break forth like dawn, and your healing will quickly appear; then your righteousness will go before you, and the glory of the Lord will be your rear guard.**

Isaiah 58:8



**I**n Sri Lanka, TLM works with three partners: ADT, KKM, and LPASL through the Collaborative Action in Finding hidden cases & increasing Expertise (CAFÉ) Project. The main focus is on reducing leprosy transmission through training and mobilising primary health workers, midwives, religious leaders and diverse community and business groups including sports clubs, youth groups, bus companies, taxi drivers and barber shops.

CAFÉ works in close partnership with various branches of the Ministry of Health on producing district road maps to tackle leprosy as well as giving technical training to senior government health officers and surgeons. CAFÉ additionally addresses the wellbeing of families affected by leprosy after treatment through training on nutrition and climate resilient agriculture as well as provision of wells for drinking water and irrigation, sanitation and the setting up of village disaster management committees.

### KEY PARTNERS

#### Alliance Development Trust (ADT)

Godfrey Yogarajah – Chief Executive Officer, ADT  
Raghu Balachandran – Director, ADT  
Williams John Anthony – Head of programs – Health  
**Kaveri Kala Manram (KKM)**

Rev Joshua Sivagnanam – Director – KKM  
Mrs Shahana Inparasa – Project Manager – KKM

#### The Leprosy People's Association of Sri Lanka (LPASL)

Mrs Debora Jeeva Malar – Director – LPA Sri Lanka  
Mr Thissanayaka – General Secretary – LPA Sri Lanka

24-30 AUG

### PRAYER POINTS

**MON:** Pray for compassion, empathy and understanding towards persons affected by leprosy among stakeholders such as government officials, health workers, and community leaders as they work in leprosy interventions.

**TUE:** Pray for improved and strengthened systems in place for persons affected by leprosy, be it healthcare, community-based services, advocacy or leadership. Pray that these systems allow them to live fully active lives as respected members of society.

**WED:** Pray for mental wellbeing and resilience of persons affected by leprosy through strengthened psychosocial support systems.

**THU:** Pray for all KKM, LPASL, and ADT personnel to be able to perform their duties effectively and efficiently. Pray that they can overcome any challenges they may face.

**FRI:** Pray that our work will lead to early diagnoses and prompt treatment. May God strengthen partnerships with health departments and other government agencies so that we can have greater impact in bringing healing, dignity, and hope to those affected by leprosy.

**SAT:** Pray for leadership of the Leprosy People's Association to have wisdom and provision as they expand their work. Open doors for funding, resources, volunteers, and grant them favour with government officials.

**SUN:** Pray for collaborative efforts between ADT, KKM, LPASL, government departments, and other NGOs. Pray that their united work will break down stigma, change attitudes, and create sustainable solutions. Above all, pray that through their service, the love of Christ will shine brightly, bringing hope and transformation to individuals and communities.

**Photo:** V. Nishantini was diagnosed with leprosy in 2015. She now lives with partial anaesthesia in her right hand and was referred to TLMGB's local partner, KKM. They supported her through self-care training and peer support. Pictured here with her children, she stands by the water storage provided through the TLMGB-funded WASH project, which now supplies water for household use and farming.

## NEPAL: Country overview

31 AUG-6 SEP

**The Lord will guide you always; he will satisfy your needs in a sun-scorched land and will strengthen your frame.**

Isaiah 58:11



**T**he Leprosy Mission (TLM) began its work in Nepal in 1957 with the establishment of Anandaban Hospital in Lalitpur. Since 2005, TLM Nepal has operated as an independent NGO with a local Board, partnering with the Government of Nepal to provide specialist care, support leprosy control programmes, and conduct globally recognised research. It also runs community inclusive development programmes focused on health, education, livelihoods, advocacy, and inclusion for people affected by leprosy and disability.

### SENIOR TEAM

Mr Shovakhar Kandel – Country Director  
Mr Abidan Parajulee – Head of Operations & Finance  
Mrs Geeta Acharya – Human Resource Manager  
Mr Tahal Acharya – President, National Cooperative and Self-Help Group  
Mr Ashok Adhikari – Chairman of TLM Nepal Executive Board  
Mr Lok Thapa – Secretary of TLM Nepal Executive Board

### PRAYER POINTS

**MON:** Kindly uphold the leaders of TLM Nepal (Country Director, Mr Shovakhar Kandel and Board Chair, Mr Ashok Adhikari). May God bless them with divine wisdom and knowledge as they lead the organisation. Please pray for their continued leadership, protection and good health.

**TUE:** Community programmes are vital for us and not only strengthen communities, but also contribute to leprosy elimination in Nepal. Pray for the safety and security of the TLM Nepal staff as they serve the community through satellite clinics, self-help groups, skin camps and advocacy.

**WED:** The National Cooperative and Self-Help Group is now officially registered under the Government of Nepal—a major milestone for TLM Nepal in the journey towards Zero Discrimination. Uniting 64 cooperatives across 17 districts, it is one of Nepal's largest leprosy-focused, community-led networks. Pray for its strength and impact in ending stigma.

**THU:** TLM Nepal has initiated a new phase of its country strategy 2026-2030. Please pray that TLM Nepal can use its past learning and experience to fill the gaps in leprosy work in Nepal and contribute to the elimination of leprosy in the country.

**FRI:** TLM Nepal supports the children of people affected by leprosy to continue their education. This has helped many shape their careers and inspired them to pursue higher studies. Pray that individuals and families affected by leprosy and disability may live strong, dignified lives.

**SAT/SUN:** Please pray for the active participation of churches in our work. May their involvement increase local ownership and help us deliver holistic care to those in need.

**Photo:** TLM Nepal's team attend the global celebrations of TLM's 150th anniversary.

## SWITZERLAND

7-13 SEP



**T**his year our focus is on our educational work in Switzerland. There is one story in particular that has given us a lot to think about.

Sheila was born in Brazil and came to Switzerland aged 13. She had already experienced some symptoms at a younger age but did not know what they were. After her arrival in Switzerland, her symptoms grew worse and she was diagnosed with leprosy. Medical treatment was difficult, and Sheila was discriminated against in her family. She even left home because she could no longer bear it. This led to a period of medical uncertainty and several relapses of the disease. To this day, she suffers from the after-effects and must live with severe pain. For a long time, leprosy was a taboo subject for her, but a year ago Sheila learnt about TLM Switzerland, where she found a team who were willing to listen to her story and help her through the difficult terrain of state support and Swiss authorities.

That is our heartfelt aim, motivation and our vision: leprosy defeated – lives transformed. We do this through funding leprosy work in DR Congo, Niger, Bangladesh, Nepal, and India.

### SWISS TEAM

Markus Freudiger – Country Leader  
Helen Woldu – Leader for French Switzerland  
Esther Kuny – Finance  
Daniel Gerber – Fundraising and Communications  
Daniela Aregger – Institutional Fundraising  
Lotti Appenzeller – Programmes  
Christine Schneeberger – Administration  
Bitania Fessahazion – Assistant Administration  
Jan Kuny – Chairman

### PRAYER POINTS

**MON:** We are grateful for our wonderful partnerships with colleagues in Bangladesh, the Democratic Republic of Congo, India, Nepal and Niger. It is wonderful to see that our strong relationships continue to deepen.

**TUE:** We pray for the successful implementation of our new Fundraising and Communication Strategy, which aims to win new, loyal donors. Please pray for creative ideas and new ways to effectively communicate the message of The Leprosy Mission to an ever-wider audience.

**WED:** We are grateful for the many loyal donors and supporters who help us year after year and who continue to surprise us with special gifts. Pray that we may continue to be recognised authentically and personally.

**THU:** Please pray for open doors and a positive response from the Swiss public, media, partners, and churches, so that The Leprosy Mission's work is seen and supported. We are grateful for every trust-based partnership.

**FRI:** We are grateful for the opportunity to get to know Sheila, a Brazilian woman affected by leprosy, and to continue accompanying her on her journey. May the invisible wounds in her soul, and in the souls of others affected by leprosy, be healed by God's love. We also pray that our efforts to promote awareness and understanding in Switzerland will bear more fruit.

**SAT:** Please pray that the book about Markus and Katharina Freudiger's work in marginalised neighbourhoods, and their extensive commitment to The Leprosy Mission, will inspire people to become donors and supporters through its touching story.

**SUN:** We are grateful for our dedicated Board and their wholehearted involvement. We also pray that God is already preparing future successors, and that our team will be inspired and move forward in unity and complementarity.

**Photo:** Sheila, a woman from Brazil who has found connection with TLM Switzerland.



## ADVOCATING FOR LEPROSY

14-20 SEP



Advocacy is a central part of our work and one of our key ways of working. We speak to governments, legislators, courts, and representatives of the United Nations to encourage them to uphold the rights of persons affected by leprosy.

Through this work we have secured access to essential medications and successfully encouraged the repeal of discriminatory laws. We have prompted governments to implement active case finding alongside preventative medication and facilitated more equal access to social protection for persons affected by leprosy. We have ensured the rights of persons affected by leprosy are included in reports by the UN Human Rights Council and we have accessed vital government funding for leprosy programmes. We have done all this and much more.

Whenever we are advocating for leprosy, we make sure that the voices of persons affected by leprosy are central to what we are saying and how we are saying it.

**Photo:** Advocacy training at The Leprosy Mission's office in Dili, Timor-Leste.

### PRAYER POINTS

**MON:** We pray that the voices of persons affected by leprosy will always be central to our advocacy efforts. We pray their voices will be heard sincerely by decision makers.

**TUE:** Join us today in prayers that governments across the world will remain open to hearing the perspectives of Organisations of Persons Affected by Leprosy and civil society organisations like The Leprosy Mission.

**WED:** The Leprosy Mission has a global-level advocacy working group. We pray for this group, that God will guide their efforts as they facilitate advocacy work across the organisation.

**THU:** The United Nations has played a crucial role in ensuring the rights of persons affected by leprosy are upheld. Since the beginning of 2025, the UN has been faced by an acute funding crisis. We pray that more funding will be accessed and that the rights of persons affected by leprosy will continue to be upheld through the UN's work.

**FRI:** We pray for Organisations of Persons Affected by Leprosy, that they may be able to more and more effectively advocate for their rights and that they will develop a positive reputation with their governments.

**SAT:** May God bless the words of all who advocate on the issue of leprosy and may God soften the ears of all who hear their words.

**SUN:** We pray above all else that our advocacy will lead to lives transformed across the world.

## MYANMAR: Country overview

21-27 SEP

**The steadfast love of the Lord never ceases; his mercies never come to an end; they are new every morning; great is your faithfulness.**

Lamentations 3:22-23



**T**LM Myanmar (TLMM) works to ensure that persons affected by leprosy and disability are included, valued, and supported across communities. Through partnerships with churches, local leaders, and humanitarian networks, TLMM promotes inclusive development, emergency response, and long-term rehabilitation.

Our orthopaedic and rehabilitation services in Taungoo, Sittwe, and Pakokku and mobile services provide vital care, including prosthetics and assistive devices. We also empower churches to establish disability resource centres and reach out with compassion to those in need.

Through collaboration and shared vision, we advocate for stronger inclusion of leprosy and disability in broader humanitarian efforts.

While the situation in Myanmar is difficult, the promise of God's steadfast love and new mercies each day provides a foundation for hope and resilience. This inspires TLMM to grow and flourish, even amidst the challenges, as we continue to serve persons affected by leprosy and persons with disabilities.

**Photo:** This commemorative photo captures TLM Myanmar staff, church pastors, and partner organisations at the joint celebration of our new Yangon office opening and TLM's 150th Anniversary.

### PRAYER POINTS

**MON:** Pray for us as we support partners to become more inclusive of persons affected by leprosy and disabilities. May these efforts lead to dignity and fullness of life for all.

**TUE:** Give thanks for our dedicated team. Pray for wisdom in data collection, unity among staff, and insight for our teams to improve systems and better serve communities.

**WED:** Lift up MAPAL, a resilient association led by people affected by leprosy. Pray for unity, strong leadership, financial sustainability, youth involvement, and an end to stigma and discrimination through their efforts.

**THU:** Pray for church-based disability centres in Chaungzon and Hpado. Give thanks for their witness and service. Ask for safety for their leaders and that more churches will follow their example in welcoming and supporting persons with disabilities.

**FRI:** Pray for our seven Board members. May they be granted wisdom, health, and strength as they lead the organisation toward greater impact.

**SAT:** Pray for our rehabilitation centres and mobile units. Ask for skilled staff, sustained funding, and high-quality services to continue supporting people in conflict-affected and remote areas.

**SUN:** Pray for our church partnerships. May churches be equipped and supported to include people affected by leprosy and disabilities. Ask for resources and commitment to help these churches become long-term sources of love and inclusion in their communities.

### SENIOR TEAM

Dr Zaw Moe Aung – TLM Country Leader  
Ms Naw Tin Tin Mar – Head of Programmes  
Ms Kalayar Tun – Finance Manager  
Ms Naw Say Say Phaw – Human Resource Manager  
Dr Hla Hla Aye – TLM Myanmar Board Chair

## FINLAND

28 SEP–4 OCT

**And let us not grow weary of doing good, for in due season we will reap, if we do not give up.**

Galatians 6:9



**T**LM Finland is a small team of volunteers. We publish material in Finnish and Swedish and present our work at public events. Many in Finland believe leprosy to belong to the past. Younger generations have not even heard of it. We are grateful for our partnership with the Swedish speaking Evangelical Free Church in Helsinki, Andreaskyrkan. Thanks to them, a wonderful fundraising concert was arranged in October 2024 to celebrate TLM's 150th anniversary. We hope for other fruitful partnerships to open with other churches and congregations.

We support leprosy work in DR Congo. We look forward to possible collaboration with the Congolese community in Finland, who have expressed interest to support the work in the DRC through us.

In 2025, we approved a new country strategy and a new fundraising strategy. We hope these guidelines will help us to develop our work, to attract new donors and to increase our contribution to the global efforts aiming at ending leprosy transmission, leprosy-related disability, and discrimination.

### SENIOR TEAM

Ms Ritva Pohti – Chair of the Board, National Director  
Ms Marja Aho – Vice Chair  
Ms Merja Luukkanen – Secretary

### PRAYER POINTS

**MON:** Give thanks for the Board members who give their time and expertise to our cause. May God give them wisdom as they strive to develop our work according to our new strategy.

**TUE:** We give thanks for the volunteers who give their time to different tasks and for the individual donors who have supported our work for many years. Pray that we could find new ways to reach new volunteers and supporters to help us to increase our contribution to people and communities affected by leprosy.

**WED:** Please pray that we could find new, innovative ways to use the communications and fundraising tools and channels already at our use. Pray that we could find ways to inspire younger generations to engage in the work for people affected by leprosy.

**THU:** We thank God for the many years of cooperation with TLM DR Congo. We pray for peace for the country which has suffered from many years of devastating violence and conflict. We ask the Lord to protect the local staff in South Kivu and strengthen them in their demanding and precious work.

**FRI:** Give thanks for the invaluable support the Andreaskyrkan continue to give us. May the Lord bless the church's staff and the amazing work they do among their parish members, by serving some of the least privileged people in our capital.

**SAT:** We thank God for all the congregations which target collections and donations to leprosy work. May God help us to better advocate our cause so that many more could be moved to donate and pray for our work and that of the entire Global Fellowship.

**SUN:** Give thanks for the interest of the Congolese community in Finland to support work in the DR Congo. May the Lord give us wisdom for establishing collaboration with them. Please pray for other similar opportunities to open for us as well.

**Photo:** Chair Ritva Pohti and Board member Bo Ekman at the 150th anniversary event TLM Finland arranged in October 2024.

## NIGER

5–11 OCT

**Now to him who is able to do immeasurably more than all we ask or imagine, according to his power that is at work within us, to him be glory in the church and in Christ Jesus throughout all generations, for ever and ever! Amen.**

Ephesians 3:20–21



**T**LM Niger operates in the regions of Niamey, Tillabéry, Dosso, Tahoua, Maradi, and Zinder, in the fields of health and socio-economic development.

The team facilitates and supports the work of their implementing partners (CSL Danja and the government) to develop the capacity of health workers to diagnose and manage leprosy, and to provide appropriate treatment so that people can manage their disabilities and have access to specialised care.

The team also builds the capacity of people affected by leprosy and other disabilities through the IDEA-Niger Association. Together, we advance their inclusion and empowerment within their communities and encourage changes that can lead to the elimination of discrimination.

### TLM NIGER TEAM

Saratou Barage – Programme Manager LCP  
Jacob Moussa – Monitoring & Evaluation Officer  
Raissa Maminata Lompo – Head of Programme LCP  
Sani Hassane – Project Manager SED  
Yohanna Abou – Head of Advocacy and CBR  
Abigail Lawali – Administrative and Human Resources Officer  
Douda Maoune – Driver/Officer Assistant  
Ichaya Garba – Head of Administration, Finance & Safeguarding  
Bunmi Oluloto – Country Director  
Iro Sani – Board Chair

### PRAYER POINTS

**MON:** Niger has been facing security challenges due to banditry, Islamist terrorism, and jihadist activity in the region close to the borders. Please pray for peace and improvement in the security situation.

**TUE:** Niger has been under military government since 2023, which has placed a burden on international and local NGOs. Please pray for wisdom for the TLM team as they work with the government under these challenging circumstances.

**WED:** SIM CSL Danja Leprosy Centre is the only centre in Niger where people affected by leprosy receive quality care, love, and access to the gospel. Pray for the success of the centre's efforts to raise funds to sustain the hospital, and for wisdom for all staff to care for people affected by leprosy.

**THU:** TLM Niger is supporting IDEA Niger, an association of persons affected by leprosy, to develop their capacity to advocate for and support people affected by leprosy. Please pray that these efforts will lead to lives transformed.

**FRI:** Pray for resilience and grace for the TLM Niger team as we work in partnership with the communities and the government of Niger to strengthen leprosy control in the field, raise leprosy awareness, and supervise health centres across the regions.

**SAT:** Pray that the Lord will strengthen the TLM Niger team and Board with wisdom and grace to serve faithfully.

**SUN:** Pray for life transformation and prosperity for the nation of Niger, so that people affected by leprosy in Niger may thrive.

**Photo:** TLM Niger Team



# Acts of kindness

**T**oday, we thank God that we are all made in His Image. We thank God that His Image is in those that we know, who are affected by leprosy, neglected tropical diseases (NTDs) and disability. We pause in deep gratitude and reflection, and thank God for the individuals and organisations who have devoted their lives to serving them. The Scripture reminds us that when we serve the least of these – those often over-looked by society – we are, in fact, serving Christ Himself.

Leprosy and disability have long been sources of great suffering and isolation. Throughout history, people affected by these conditions have faced not only physical pain but also rejection, stigma, and loneliness. Yet, in the midst of their struggles, God has not forgotten them. His love and compassion are ever-present, and He calls us to join in this mission of love by serving those in need. The work of healing, both physical and emotional, is often done through the hands of those who are willing to step into the darkness and bring the light of Christ's love.

Today, we give thanks for the countless people and organisations that are working tirelessly to bring hope, dignity, and healing to those affected by leprosy, NTDs and disability. We thank God for their commitment to breaking down the walls of isolation, for their compassionate hearts, for their willingness to serve with humility, and to enter places of poverty, desperation and insecurity to help those in need. Their work reflects the heart of Christ, who challenged the perceptions of his ministry by deliberately reaching out to the marginalised, the shunned and the forgotten.

## PRAYER:


*Gracious Father,*

*We thank You for Your unfailing love and compassion for those who suffer, especially for those affected by leprosy, NTDs and disability. May they know the depth of Your love and care for them. For those who have been healed or are on the path to healing, we offer our gratitude for the gift of restoration and recovery.*

*We give You praise for the hands and hearts of those who serve, heal, and restore. Thank You for their selfless dedication to bringing Your love to the least of these. For the caregivers, the healthcare workers, the advocates, and those who work to alleviate suffering and bring dignity to those who have been forgotten, we pray for continued strength, wisdom, and grace. Lord, help us all to remember that when we serve others, we are serving You. May our work continue to value God's Image in those we reach – bringing healing, hope, and transformation to lives that desperately need Your touch. May we be Your hands and feet in this world, showing love and kindness to all, especially to those in need. In Jesus' name, Amen.*

## Patricia Smangen-Maroa

The Leprosy Mission Papua New Guinea  
Community Development Facilitator



**The King will reply,  
'Truly I tell you,  
whatever you did  
for one of the least  
of these brothers  
and sisters of mine,  
you did for me.'**

Matthew 25:40





Our healthcare work covers case detection, awareness, treatment and management of complications. It contributes the important elements of zero transmission and disability through early case detection and management of leprosy complications. Healthcare projects operate across 19 districts, including all endemic areas identified by the National Leprosy Programme. Around 55 percent of national leprosy cases are detected by TLM Bangladesh projects. The Leprosy Mission's DBLM Hospital serves as a specialised reliable centre for leprosy complication management that offers holistic care nationwide.

Research on leprosy is seen as a game-changing contribution towards 'Zero Leprosy.' Field Research in Bangladesh focuses on various dimensions, including strategies to interrupt transmission and reducing leprosy-related disabilities. Our research teams are proudly contributing to international efforts to find the best combination of antibiotics to prevent leprosy (known as PEP++). We are also establishing our own PCR lab so that we can extend our lab-based research. Our efforts to collaborate with local institutes, the government leprosy programme, and universities has also enhanced leprosy research and is leading to better-informed decision making.

Photo: A community clinic, the nearest health care point for many communities.

PRAYER POINTS

- MON:** The iAct-End Lep project is starting in 2026. It aims to strengthen active case finding efforts and train front-line government health staff in leprosy detection. Please pray that it will make a real impact on leprosy transmission.
- TUE:** Pray for the success of the new initiatives of the DBLM Clinic in Thakurgaon and Rangpur, aiming to establish doorstep sustainable leprosy services. Pray this will be a blessing to these communities.
- WED:** Please pray that our efforts to increase collaboration on healthcare will bear fruit. We are aiming to maximise collaboration within the local health system and amongst our partners, churches, and OPLs.
- THU:** The PEP++ study finished in April 2026. Thank God with us for timely his timely provision of resources and guidance for the team.
- FRI:** We seek prayers for the successful installation and operation of our new PCR lab. This lab will play a vital role in advancing leprosy research and diagnosis.
- SAT:** Uphold our research team in prayer for their health, diligence in follow-ups, and study schedules..
- SUN:** Pray for the government's leprosy programme. They are rolling out preventive medication (SDR-PEP) in new locations and working on new strategic initiatives. Please pray that their work will run smoothly and successfully.

SENIOR TEAM

- Dr Benjamin Jewel Rozario – National Lead (acting): Healthcare
- Dr Abu Sufian Chowdhury – Clinical Research Coordinator
- Dr Pobon Rozario – Sr. Medical Officer-in charge: DBLM Hospital
- Mr Jeorge Biswas – Project Manager: Proyash & MEPD Project
- Mr Sultan Md. Elias Uddin – Project Manager: SZLT
- Mr Parach Chakma – Project Manager: CHTLC & RP
- Dr Abhijit Saha – Research Manager: PEP Study
- Ms Tanjum Ara Haque – Laboratory Research Manager

Enter His gates with thanksgiving and His courts with praise; give thanks to Him and praise His name. For the Lord is good and His love endures forever; His faithfulness continues through all generations.

Psalms 100: 4-5



We at The Leprosy Mission Australia are thankful for God's leading. We give thanks for supporters who pray, advocate, and financially support the Mission. We pray to inspire new supporters to reach out and help people affected by leprosy. Together we ensure people affected by leprosy get the cure, care, and restoration they need to live life in all its fullness.

Our vision of a leprosy-free world sees us working alongside The Leprosy Mission and other organisations in Nigeria, Timor-Leste, Nepal, India, and Indonesia. We praise God for His faithful provision and timing, joining with donors, volunteers, churches, shoppers, schools, and local organisations to make a difference for today and tomorrow. The Leprosy Mission Australia is committed to defeating leprosy and transforming lives. We pray that we will continue to show the love of God, extending the hand of 'mateship' to those in need.



Visit stillalathing.org to learn more about our work.

Photo: TLMA staff at their Staff Vision Day 2025.

PRAYER POINTS

- MON:** Praise God for supporters who faithfully pray, advocate, and financially support the work of the Mission. Pray their kind-hearted love will have a great impact on people and communities affected by leprosy.
- TUE:** Thank God for opportunities to partner and collaborate with organisations to bring about sustainable change. Pray for unity and wisdom as we continue to build relationships that bring us closer to a world without leprosy.
- WED:** Give thanks for dedicated, passionate staff who work tirelessly to promote the work of The Leprosy Mission. Pray for times of Godly refreshment and inspiration as we collaborate to reach our vision of leprosy defeated and lives transformed.
- THU:** Praise God for our committed volunteers who show great care and love for people affected by leprosy. Pray their efforts through advocacy and fundraising will continue to help The Leprosy Mission Australia thrive.
- FRI:** Give thanks for creative people who begin new initiatives to reach more people. Pray for more creative thinking to help raise awareness and funds so that we can bring dignity and hope to people in need.
- SAT/SUN:** Thank God for the love and compassion shown by churches around Australia. Pray both current and new churches will partner with us to make a difference through prayer, fundraising, and awareness building.

SENIOR TEAM

- Dr Greg Clarke – Chief Executive Officer
- Geraldine Toh – Chief Financial Officer
- Helen Fernandes – Head of International Programs
- Paul Andrews – Fundraising and Communications Lead
- Supa Thejan – Social Enterprise Manager
- Sean Dostal – Strategic Relationships Lead
- Nerida Collard – Operations & HR Manager



# INDIA: Healthcare

26 OCT-1 NOV

**The thief comes only to steal and kill and destroy; I have come that they may have life and have it to the full.**

John 10:10



**T**he Leprosy Mission Trust India—through 15 hospitals and 2 clinics across nine states—provides specialised leprosy services, including diagnosis and management of leprosy and its complications, with all the units offering reconstructive surgery, physiotherapy, protective footwear, and counselling services. The hospitals offer allied services, including dermatology, ophthalmology, general medicine, general surgery, diabetes care, dental, obstetrics and gynaecology. The hospitals also provide advanced disability management services through a range of orthotic, prosthetic, and surgical interventions.

The hospital staff are driven by their commitment to heal and care for people affected by leprosy and other disabilities. With the Lord's wisdom and guidance, TLMTI will continue to reach out to people in need of leprosy and non-leprosy care.

**Photo:** Dr Vijayakumar inspecting a patient with clawed fingers.

## PRAYER POINTS

**MON:** Praise God for good leprosy-focused clinical services and that this focus remains in the hearts of all our staff.

**TUE:** Our hospitals get many complicated cases and we have challenges in managing them as we do not have enough specialists in every hospital. Pray that the Lord will continue to heal all our patients.

**WED:** With the cost of healthcare increasing, we need resources to meet the needs in our hospitals. Pray that the Lord will provide the needed resources.

**THU:** In these times of dwindling leprosy expertise, pray that God will continue to raise a generation of healthcare workers who will be committed to the cause of leprosy.

**FRI:** As we plan to go beyond health services into training and capacity building, we pray that all doors will have opened to start the right training.

**SAT:** Pray that God will raise new generations of his people who will take leadership roles for the future.

**SUN:** Let our prayers be that Christ will genuinely be at the centre of everything that we do: our spiritual life, our clinical services and in our fellowship.

## HEALTHCARE LEAD

Dr Famkima Darlong – Head of Healthcare

# NORTHERN IRELAND

2-8 NOV

**We wait in hope for the Lord; he is our help and our shield. In him our hearts rejoice, for we trust in his holy name.**

Psalms 33:20-21



**T**LM Northern Ireland is dedicated to, and passionate about, increasing awareness of leprosy in Northern Ireland (NI) and amplifying the voices of those affected by leprosy.

Our small team of six strives to increase prayer support and funds for projects implemented by our partners in India, Nepal, Bangladesh, Ethiopia, Mozambique and Nigeria. We seek to play our part in defeating leprosy and bringing transformation by raising funds, advocating and building partnerships.

While nurturing relationships with existing supporters, churches, trusts, and grant funders, we actively seek new partners and donors. Our main opportunities include speaking at churches and events, fundraising appeals, online engagement, and keeping supporters updated on the impact of their giving. We long for growth in each area and increasing opportunities to share our message in strategic areas of influence. To find out more, visit our website: [leprosymissionni.org](http://leprosymissionni.org)

## TLM NI TEAM

Joy Fleming – TLM NI Country Leader  
Joy Jamieson – Office & Finance Manager  
Hazel Coulter – Database Administrator  
Stephen McCartney – Supporter Engagement Officer  
Judith Carson – Board Chairperson

## PRAYER POINTS

**MON:** Pray with us as we implement our new local strategy. We praise God for directing us to new initiatives and for providing new team members. Ask for unity, vision, renewed energy and passion as we seek to increase prayer, engagement, new income streams, regular giving and fundraising efforts. May God grow our faith and establish the work of our hands.

**TUE:** We're so grateful for individual supporters, churches, volunteers and other partners across NI who have the heart and passion to care for those affected by leprosy. Give thanks for their faithful giving and prayer and ask God to bless, sustain and inspire each one.

**WED:** We seek to raise a new generation of supporters and volunteers. Pray for creativity, wisdom and guidance as we reach out to new and younger audiences and mobilise and equip our team of volunteer speakers, church reps and fundraisers.

**THU:** Give thanks for the gifts, experience and Godly leadership of our Board, and for our dedicated staff team. Ask that all we do would be Christ-centred and that those affected by leprosy would always be at the heart of our strategies, plans and decisions.

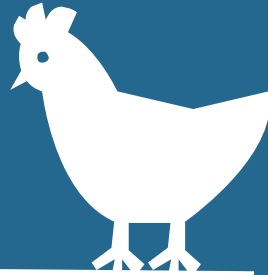
**FRI:** We praise God for opportunities this year to interact with the partners and projects that TLM NI supports. We're inspired by what we have seen and heard, renewing our heart connection with persons affected by leprosy. Pray this passion will be evident in all our engagement activities and that we'll find new ways to help supporters connect more deeply with the people and work they support.

**SAT/SUN:** Please pray for the staff and persons affected by leprosy in the projects we support. Ask for deep healing and true transformation. Pray that they will feel the care and compassion of our supporters in Northern Ireland.

**Photo:** The TLM NI staff team at our office in Lisburn (April 2025).



# ZARA'S STORY



**A**t just 15 years old, Zara's life changed forever. Zara is from Ethiopia and she discovered strange patches on her skin. Her parents took her to the hospital, but when they learned she had leprosy, they left her at the hospital and returned to their village. Zara was no longer welcome in her own community.

She was given a small house near the hospital. Her world became very small, only others affected by leprosy would associate with her. In that shared space of healing, she met her husband and had four children. But her husband passed away, and Zara was left to raise their children by herself.

Despite the hardships, through TLM and the We Are Able! project, a new chapter began. Zara joined advocacy training and learned about her rights. She also took part in business and skills training and, with the help of a government loan, began chicken farming.

This wasn't just about income—it was about rebuilding her autonomy. Now, Zara has a dream: to grow her business by shifting to cattle fattening, a step that could bring greater income, a bigger home, and education for her children.

**"I now have opportunities and dreams to develop further and can take care of myself and my family."**

"Thanks to the leprosy hospital in Bisidimo and the We Are Able! project, I am no longer socially excluded," she says. "I now have opportunities and dreams to develop further and can take care of myself and my family".

Zara's story is a powerful reminder that rejection doesn't define people's path, resilience does. When women are empowered through education and made aware of their rights, they can overcome the limitations imposed by others.





## GERMANY

Then He touched their eyes, saying, 'According to your faith let it be to you'. And their eyes were opened.

Matthew 9:29–30



**T**LM Germany is a small association that operates mainly in the south of Germany and is very much founded on personal contacts. We maintain partnerships with various churches and communities, and have a large circle of supporters thanks to them.

The six-member Board guides and supports the work of the office, which employs two part-time staff members. The desire to be able to contribute even more to the vision of zero leprosy transmission by 2035 through a larger donation volume has grown in recent years. In implementing this wish, the office receives support from the Fundraising Advisory Board and Members of The Leprosy Mission's Global Fellowship.

**Photo:** TML Germany Team – From left to right: Christof Soberger (Treasurer), Katharina Kraufmann, Dr Vera Kömpf (Chair), Ines Böhret, Bettina Merz (Managing Director / Country Leader), Corinna Blaich. Not pictured: Dr Johannes Schäfer (Vice Chair), Joel Bremekamp, and Pastor Bernd Weissenborn.

9–15 NOV

### PRAYER POINTS

**MON:** We thank God for our loyal supporters and friends. We pray for their love, their motivation and for their ideas. We pray for God's blessing over them.

**TUE:** We thank God for our Board members, their time, their motivation and their commitment. We pray for God's blessing over them, to make the right decisions, to bring The Leprosy Mission forward and to establish a strong and Christ-centred organisation.

**WED:** Please pray for our small staff team. Pray for strength, open eyes and right decisions. Pray for their fundraising activities to find the right words to touch people and to raise awareness and more money for people affected by leprosy.

**THU:** We thank you God for all our colleagues worldwide. Thanks that we are connected in Jesus Christ. We pray for everyone's safety, health and protection.

**FRI:** We thank you God for all the people we met last year in the field, in our office, in our churches, families and neighbourhoods. Let us be aware that we are disciples of Jesus Christ. Let us pray that we will be a blessing.

**SAT/SUN:** Let us pray for our world, for peace, for justice and wisdom to handle all the challenges we are facing. Let us pray for all the governments and decision makers, that they act with love, wisdom and foresight.

### SENIOR TEAM

Dr Vera Kömpf – Chair  
Bettina Merz – Country Leader

## OUR PARTNERS

16–22 NOV



### Effect Hope

**E**ffect Hope is a Canadian Christian global health organisation, and the largest organisation in Canada focused exclusively on serving people affected by Neglected Tropical Diseases (NTDs). We partner with global leaders and local communities to design and implement culturally relevant, sustainable health programmes in Asia and Africa.

By working directly with communities affected by NTDs, we help them better understand how to prevent, identify, and seek timely treatment while strengthening the health system around them.

### Hope Rises International

**O**ne billion people are suffering in isolation from neglected tropical diseases like leprosy, unaware that help exists. For over 100 years, we have served as a channel of Christ's love, providing healing and hope, and with the help of generous supporters like you, restoring lives every day. We work alongside local leaders, pastors, and Christian partners to provide life-changing care today and the lasting hope needed for tomorrow. Hope Rises International was formerly known as American Leprosy Missions.

### SENIOR STAFF

#### Effect Hope

Kim Evans – CEO  
Maneesh Phillip – VP, International Programs  
Anna Wickenden – VP, Advocacy & Strategic Partnerships  
Lee-Anne Teague – Director of Finance & Operations  
Breanna Willock – Director of Communications & Marketing  
Josephine Cavarra – Director of Development

#### Hope Rises International

Bill Simmons – President and CEO  
Jim Oehrig – Global Advisor, Christian Partnerships  
Melissa Edmiston – Vice President of Programs  
Beverly Elmore – Vice President of Finance  
Pamela Armstrong-Pautz – Vice President of Development  
Sarah Hesshaus – Vice President of Operations

### PRAYER POINTS

#### Effect Hope

**MON:** Please pray for our partners in the field, asking for their protection and that God grants them strength, wisdom, and courage. May they serve with integrity, bringing glory to God, and offer lasting hope to those they reach.

**TUE:** Please join us in prayer for supporters and financial partners of Effect Hope. May they feel inspired and empowered to spark meaningful change. We pray their passion grows, their efforts bear fruit, and their hearts stay full of purpose and hope.

**WED:** Join us in praying for the global health community. May those in medicine, public health, and humanitarian work be led by compassion and wisdom. Pray they are given the strength, resources, and encouragement to persevere as they serve the most vulnerable.

#### Hope Rises International

**THU:** Join us in praying for Hope Rises International's Christian partners around the world. Ask God to strengthen and sustain them as they serve in challenging and often under-resourced areas. Pray for wisdom, compassion, and boldness as they share Christ's love, provide care, and bring healing to those affected by neglected tropical diseases.

**FRI:** Join us in lifting up those affected by neglected tropical diseases. Ask the Lord to provide access to medical care, restore dignity, and bring hope to those who feel forgotten.

**SAT/SUN:** Join us in praying for Hope Rises International. Ask God to guide the organisation with wisdom, compassion, and clarity of mission as we serve vulnerable communities around the world. May every effort reflect God's heart and bring lasting transformation.

**Photo:** After 3 years with lymphatic filariasis, 40-year-old Rubi Khatun found hope. With self-care techniques, she improved 30% in 3 months – and now helps others in her village fight LF.

## THE LEPROSY MISSION SHOP AUSTRALIA

23–29 NOV

**Speak up for those who cannot speak for themselves, for the rights of all who are destitute. Speak up and judge fairly; defend the rights of the poor and needy.**

Proverbs 31:8–9



**A**t The Leprosy Mission Shop Australia, every purchase is an act of love. As one of Australia's largest fair-trade retailers and a certified Social Traders social enterprise, we offer a thoughtfully curated range of handcrafted, ethically sourced products from around the world.

Each item supports people affected by leprosy, disability and poverty, helping them build brighter, more dignified futures. We partner with artisans, the majority of whom are women, and fair-trade groups across India, Nepal, Bangladesh, Sri Lanka, Timor-Leste, Nigeria, Vietnam and Israel/Palestine. Many have faced exclusion due to illness, disability, gender, or stigma. By bringing their work to the Australian market, we help provide fair wages, meaningful employment and a platform for their stories to be celebrated. We also work with ethical local suppliers in Australia to support the local economy.

Our operations comply with the Modern Slavery Act and are grounded in transparency, ethical sourcing, and long-term impact. Proceeds from our sales go directly into projects that help defeat leprosy, improve access to medical care and education, and support sustainable livelihoods in marginalised communities. Every purchase changes lives.

### SENIOR STAFF

Supa Thejan – Social Enterprise Manager  
Louise Kelly – Product Manager  
Carlo Giletti – Inventory & Logistics Manager  
Crystal Nguyen – Marketing Coordinator  
Kajal Joshi – Digital Marketing Specialist

### PRAYER POINTS

**MON:** Give thanks for the generous customers who support The Leprosy Mission Shop Australia. Pray that their kindness will be richly blessed and that they will be encouraged by the real difference their purchases and donations are making. Ask that their hearts remain inspired to continue uplifting others through their support.

**TUE:** Praise God for the talented artisans whose hands create the beautiful products we offer. Many live with the challenges of leprosy, disability, and poverty. Pray that their work brings them joy, purpose and a sustainable income to support themselves and their families.

**WED:** Praise God for the successful migration to the new enterprise resource planning system. Pray for wisdom, clarity, and patience as staff receive training and adjust to new processes. Ask for ongoing guidance as the team looks for ways to improve efficiency and better serve customers and communities through this new system.

**THU:** Pray for the producers, artists and designers who partner with the Shop. Ask that these partnerships continue to flourish and grow stronger. Pray that increased engagement through these collaborations will attract new customers to The Leprosy Mission Shop Australia and expand the reach and impact of the mission.

**FRI:** Lift up those who benefit from Gifts of Love, such as protective shoes, scholarships, chickens and vocational training. Pray these practical gifts will meet urgent needs and bring long-term transformation to people affected by leprosy, disability, and poverty through our projects across TLM's Global Fellowship.

**SAT/SUN:** Give thanks for the dedication of volunteers, churches and Christian groups who promote the Shop by distributing catalogues, hosting stalls and raising awareness. Pray their efforts will glorify God, inspire others to get involved, and bring ongoing blessing to those we serve.

**Photo:** Artisans at New SADLE in Nepal.

## SOUTH KOREA & NORWAY

30 NOV–6 DEC



### South Korea

**I**n Korea, there are no new cases of leprosy among Korea's native population, and the average age of Korean patients has now risen to over seventy. In this context, there has been a growing number of leprosy cases identified in recent years among migrant workers entering Korea from Southeast Asian countries.

TLM Korea is praying and striving to find effective ways to ensure early diagnosis and treatment for these newly arrived migrant workers.

### Lepramisjonen Norge (Norway)

**T**LM Norway is a supporting country, primarily sending funds to Nigeria and India. In addition to raising money, we also collect and distribute medical equipment and support medical developments for the treatment of leprosy.

**Photo:** Abdullahi Adamu is one of the stars in TLM Norway's film project. He was being treated for a foot ulcer when we visited him.

### PRAYER POINTS

#### South Korea

**MON:** TLM Korea supports people affected by leprosy and related disabilities, as well as their families, through mobile outpatient clinics in villages for people affected by leprosy in Daegu and the surrounding areas. We ask for your prayers as we continue visiting local churches in these villages at least once a month, building and strengthening meaningful relationships.

**TUE:** Most leprosy patients in Korea are elderly. Please pray that their lives may be filled with peace and comfort, grounded in steadfast faith, even in the midst of their suffering.

**WED:** Please pray for all the staff of TLM Korea. We ask for your prayers that the members of the Board of Directors, as well as all the staff at Jesus Hospital and Jesus Village Nursing Home, may be blessed with good health and wisdom.

#### Norway

**THU:** We thank God for his mercies and opportunities to do His will in the fight for eliminating leprosy. Please pray that people do not develop complications from leprosy. Please pray for people affected by leprosy with ulcers, so they can be healed by God's power, and pray for the developing of new medical treatments.

**FRI:** Pray for the Board of TLM Norway, for wisdom to restart the work all over the country. Pray for new Board members and volunteers for the organisation.

**SAT/SUN:** Please pray for TLM Norway's work engaging new donors and accessing funding from larger companies. Pray for the necessary steps to receive funds from the government.

### SENIOR STAFF

#### South Korea

Allun Cho – Chairman of TLM Korea  
Ki Hyo Bae – Vice-chairman of TLM Korea  
Nan Hee Kim – Medical Director

#### Norway

Glenn Larsen – Chairman



# Finding God's presence in the quake's aftermath

**T**he earth beneath us has trembled. On 28 March 2025, a 7.7 magnitude earthquake violently shook Sagaing and Mandalay, its tremors rippling across Myanmar and beyond. In the very regions where our field office and rehabilitation centre are located – Mandalay and Taungoo – the impact has been profound. Our hearts ache for the communities we serve, especially those already vulnerable: people affected by leprosy and persons with disabilities, who now face even greater challenges amidst this devastation.

The immediate aftermath was challenging. At that time, assistance from traditional rescue agencies was scarce and coordination was difficult. Yet, in this immense struggle, we are reminded of a powerful truth: “With man it is impossible, but not with God. For all things are possible with God” (Mark 10:27).

This is not a message that God prevents all trials. The biblical narrative is rich with examples of God's people enduring immense hardship, not shielded from the storm, but sustained within it. Consider Daniel, not spared from the lion's den, but delivered inside it. Think of his friends, Shadrach, Meshach, and Abednego, walking through the fiery furnace, unharmed. And recall Jesus on the boat with His disciples, asleep amidst a raging storm, only to calm it with a word. These are witnesses to a profound truth: God doesn't always stop the trials, but He is always with us through them, delivering us in His perfect time.

Isaiah 43:2 promises, “When you walk through the fire, you will not be burned; the flames will not set you ablaze.”

Our human instinct is to pray for a perfect path, free from difficulties, asking for God's


protection from all trials. Indeed, we affirm with Jeremiah 32:17 that there is truly nothing God cannot do. Yet, the Christian path is not a path devoid of risk, but one where God is ever-present within the risk. It calls for full surrender, recognising that our desire for a perfectly comfortable situation may not align with God's greater purposes.

During that moment of profound need, TLM Myanmar, in partnership with local churches, communities, and church leaders – many of whom were also deeply affected – stepped forward. We were privileged to launch an earthquake response project which provided urgent support for essential needs like food, clean water, cash, medical care, hygiene, and sanitation. Our field team vividly remembers the words they heard from a woman who said, “This amount of money, never before in my life have I held it with my own hands.” She was a person who lived hand-to-mouth, surviving day by day with her family. A young man, now the primary breadwinner for his family, expressed his relief, saying, “I fixed the leaning parts of my house and got some capital to sell things to earn a living.”

As we journey through this crisis, let us hold fast to the unwavering presence of God. He is with our church partners and field team on the ground, with the affected communities, and with every person striving to bring hope and healing. Even when it feels impossible, we trust in the God for whom all things are possible. Let us surrender our fears and anxieties, knowing that even in the midst of the earthquake's aftershocks, God is at work, comforting, providing, and guiding us to be His hands and feet in this time of great need.

**Say Say Phaw**

HR Manager at The Leprosy Mission Myanmar



**'Ah, Lord God! It is you who have made the heavens and the earth by your great power and by your outstretched arm! Nothing is too hard for you.'**

Jeremiah 32:17



## INDIA: Working with communities

7-13 DEC

**As iron sharpens iron, so one person sharpens another.**

Proverbs 27:17



**S**tigma and discrimination against people affected by leprosy creates a disabling environment for them, affecting their socio-economic conditions and their self-esteem. The Leprosy Mission Trust India (TLMTI) identifies, counsels, and supports such individuals in gaining new skills and accessing livelihood opportunities. TLMTI, through several community-based rehabilitation projects, focus on different age groups, genders, and geographies, customising their interventions according to local needs.

Besides working towards financial independence, these projects empower communities to become change agents so that they can raise awareness amongst local leaders about leprosy, gender equality, human rights, and inclusion. They build the capacity of Self-Help Groups (SHG), Organisations of Persons with Disabilities, and disaster risk reduction groups to become resilient to disasters.

The projects emphasise skills-building amongst girls and women affected by leprosy, facilitating the formation of SHGs.

**Photo:** Students at TLMTI Urban Skill Training Centre in Noida being trained in beauty therapy.

### PRAYER POINTS

**MON:** We pray that our community programmes will bring about holistic development in the lives of people affected by leprosy. May they experience healing, inclusion, and dignity.

**TUE:** Pray that our vocational training centres will be able to reach out to many deserving young people affected by leprosy and other disabilities so that they can get access to quality training, continue their education, develop their full potential, become successful in life, and be great advocates and role models.

**WED:** Pray for the collectives of people affected by leprosy and other disabilities. Grant them the capacity they need to function as strong advocates for good mental wellbeing, early detection, and inclusive development.

**THU:** Grant God's protection to all staff of the community empowerment programme. May they effectively utilise the knowledge gained from their training.

**FRI:** Pray for the communities we work with. Help them to understand and recognise the benefits of inclusive development and offer their full support to include families affected by leprosy.

**SAT:** Empower champions affected by leprosy to become strong advocates. May they raise their voices effectively and address the stigma and discrimination faced by those affected by the disease.

**SUN:** Pray that the community programmes will bring about holistic development in the lives of people affected by leprosy. May they experience healing, inclusion, and dignity.

### COMMUNITY EMPOWERMENT LEAD

Tina Mendis – Head of Sustainable Livelihood and Community Empowerment

## BANGLADESH: Inclusive development & advocacy

14-20 DEC



**T**he Inclusive Development work within TLMB addresses the physical and socio-economic needs of persons affected by leprosy. Projects under this theme aim for stigma reduction, sustainable livelihoods, educational support, and climate adaptive interventions all with the support of Organisations of Persons Affected by Leprosy and Disability. TLMB supports these organisations so they can build their leadership skills and their capacity for good governance and sustainability.

Advocacy, as a cross-cutting issue, is recognised as an important theme in the Bangladesh context, allowing us to ensure the rights of persons affected by leprosy. The team promotes open dialogue and engages stakeholders to stand firm in their commitments. Through collective faith and action, they seek to move closer to a vision of Bangladesh where dignity, justice, and health are accessible to all.

**Photo:** Partnership and collaboration are great pathways to reach zero Leprosy.

### PRAYER POINTS

**MON:** Please pray for the swift and successful registration of Bangladesh's leading Organisation of Persons Affected by Leprosy, ALO Society, as an NGO, enabling them to represent persons affected by leprosy. May bureaucratic barriers be removed, and their voice in policy spaces be fully recognised.

**TUE:** We pray for the good health and wellbeing of all staff members, their families, and the communities they serve. May they remain strong, motivated, and empowered to deliver their best in service to others.

**WED:** Pray for our work to build the capacity of organisations of persons affected by leprosy and disability. Pray especially for our work together on climate adaptation and resilience, that this will be transformative for communities.

**THU:** Pray for our ongoing partnerships with churches. Pray that they will be able to effectively and sustainably contribute towards zero leprosy in their communities.

**FRI:** Please pray for our partnerships with organisations of persons affected by leprosy. Pray that they will be able to participate across all of our work.

**SAT:** Pray for sustained advocacy and partnership initiatives that can ensure justice, inclusion, and access to services for those affected by leprosy.

**SUN:** Please pray for our work to support children with their education and to support people with their livelihoods. We pray that these efforts will successfully transform lives.

### SENIOR TEAM

Mr Surendra Nath Singh – National Lead: Inclusive Development  
 Ms Monika Biswas – National Lead: Advocacy  
 Mr Joseph Tutul Biswas – Project Manager: Building Resilience for Better Life  
 Ms Lovely Probhathi Mrong – Project Manager: Dhaka CBR  
 Ms Kolpona Kispotta – Project Manager: Hagar  
 Mr Ambor Chisim – Project Manager: NUPIP and BRC  
 Mr Noyel Tappa – Project Manager: AEP  
 Mr Noel Manna Dey – Finance Manager



## SWEDEN

21-27 DEC

**Let us not become weary in doing good, for at the proper time we will reap a harvest if we do not give up.**

Galatians 6:9



**T**he Leprosy Mission Sweden was established 40 years ago in 1985. Based in Kumla, TLM Sweden works to raise awareness about leprosy and give support to people affected by leprosy and disabilities. Through fundraising among individuals, organisations, corporations and churches, TLM Sweden works to fulfil its vision. A monthly fundraising magazine, with challenges and reports from our programmes, is sent all over the country. A number of presenters and preachers give information and raise money in churches across the country. Information about leprosy is shared with Christian groups, churches and schools.

Together with the Swedish Mission Council and six other members, TLM Sweden have built a Consortium that receives funds from the Swedish government (SIDA). TLM Sweden supports work in India, Nigeria, and DR Congo.

TLM Sweden also has contact with their neighbouring Nordic countries for different areas of mutual support and partnership through TLM's Nordic Hub.

**Photo:** Director Johan in the middle of programme managers, Kismat and James, during TLM's 150-year celebration in India.

### PRAYER POINTS

**MON:** Thank God for our TLM partners in India, Nigeria, and DR Congo. Give thanks for the fantastic work they are doing.

**TUE:** Give thanks for the faithful support of our donors. Pray for new donors and for the success of activities and campaigns that aim to reach new supporters.

**WED:** Thank God for good cooperation between TLM Sweden and SIDA, the Swedish government. Pray for continued and increased funding and support.

**THU:** Pray for well-developed and strong cooperation between the TLM organisations in the Nordic Hub.

**FRI:** Thank God for the Board of TLM Sweden and for the members' willingness to lead our work. Pray for wisdom in leadership and courage for new steps and initiatives.

**SAT:** Pray for the staff team of TLM Sweden, for God's guidance and wisdom in their work. Pray for the right priorities and openness to new initiatives. Pray for inspiration, teamwork, and energy.

**SUN:** Pray for increased support and partnership with churches, organisations, and corporations. Thank God for the work of our presenters and preachers all over the country. Pray for new inspiration and open doors.

**God jul (Happy Christmas) from Sweden!**



### SENIOR TEAM

Johan Bäckrud – Country Leader  
Thandekile Moyo – Programme Coordinator  
Magdalena Persson – Administration, Finance  
Shelley Lado – Finance (consultant)  
Allan Ekstedt – Chairman of the Board and Nordic Hub Coordinator

## NEPAL: Community transformation

28-31 DEC

**Praise be to the God and Father of our Lord Jesus Christ! In his great mercy he has given us new birth into a living hope through the resurrection of Jesus Christ from the dead.**

1 Peter 1:3



**C**ommunity-Based Inclusive Development (CBID) is one of TLM Nepal's core strategic pillars and reflects our commitment to ensure that individuals with lived experiences of leprosy and disability are included in the community development process. Through CBID, we work closely with communities to promote equity, build local capacity, and create sustainable systems that support health, education, livelihoods, and social inclusion.

**Photo:** A photo of an individual affected by leprosy with the pair of chickens supported through The Leprosy Mission Nepal.

### PRAYER POINTS

**MON:** Self-care practice is very important to prevent the risk of increasing disability. Self-Help Groups at the community level meet to discuss their social and economic matters and to encourage one another in self-care practice. Please pray for the Self-Help Groups so that they can invite new patients to the group and encourage regular self-care practice.

**TUE:** TLM Nepal is working in close coordination with Local Government Health Centres, where leprosy cases are still commonly diagnosed. The prayer we have for this work is that these teams will be able to detect and diagnose cases effectively and then put patients onto treatment. Please pray that a good coordination of work continues with the Government systems.

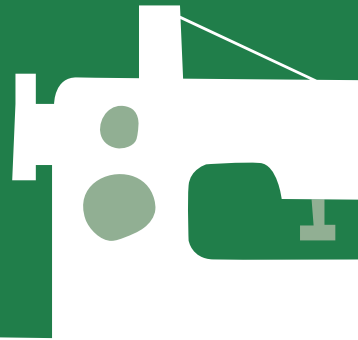
**WED:** TLM Nepal has been working and maintaining a healthy relationship with different like-minded organisations through the Nepal Leprosy Network. Please pray for continued good leadership for the network and for its work to address discrimination due to leprosy at all levels of society.

**THU:** The SPROUTS project aims to achieve the triple zero targets in leprosy and uplift people affected by leprosy, disability, and communities in marginal situations. Pray for transformed lives, especially in health and economic wellbeing.  
SPROUTS: **S**trengthening **P**athways for **E**conomic **R**esilience through **O**pportunities to Communities for **S**ustainability

### SENIOR TEAM

Dr Jivan Shakya – Research Head  
Mr Dilip Shrestha – Project Manager, WRAP Study  
Mr Suman Gyawali – Project Manager SPROUTS Project

# MICAIAH'S STORY



**Seven-year-old Micaiah: our youngest supporter in New Zealand**

**T**he Leprosy Mission had a partnership day with Radio Rhema in New Zealand to raise awareness and funds for people affected by leprosy.

From this day, we received a big donation from a seven-year-old superstar. Micaiah told us she was touched and motivated by the stories she heard on the radio. She was gifted a sewing machine on her birthday and was so excited to start sewing straight away!

She spent the next three months raising money through selling her homemade scrunchies and bake sales.

Micaiah made scrunchies and continuously prayed for girls affected by leprosy. She also tracked her donation progress using a creative chart she drew.

"The fundraising process was sometimes very hard and boring, but Micaiah pushed through," says Micaiah's mum, Rebekah.

Micaiah then prayed over a few scrunchies and sent them to us here at The Leprosy Mission NZ to bring to young girls with leprosy, "so that the precious young girls who wear them will know that Jesus loves them," she says.

Here are the words Micaiah sent to us along with her donation:

**"To The Leprosy Mission,  
Here is \$1199 to cure leprosy.  
I want them to have a good  
life, not death. I made  
scrunchies to raise money.  
Here are some scrunchies  
for some girls with leprosy.  
I hope that when they wear  
the scrunchies that they will  
remember Jesus and that  
He loves them and that He  
wants to give them life and  
freedom and joy.**

**Love from Micaiah"**

"Jesus turned five loaves and two fishes into baskets and baskets of food. I believe these few scrunchies and few dollars carry more than just a few scrunchies and few dollars... there's salvation comes with that, and girls affected by leprosy will be impacted and will meet with Jesus. That's our prayer!" Rebekah, Micaiah's mother, declared.





# COUNTRY CONTACT DETAILS

## International Office

80 Windmill Road  
Brentford  
Middlesex TW8 0QH  
UK  
**Tel:** +44 (0)20 8326 6767  
**Email:**  
reception@leprosymission.org  
**Website:** leprosymission.org

## TLM Shop

Goldhay Way  
Orton Goldhay  
Peterborough PE2 5GZ  
UK  
**Tel:** +44 (0) 1733 239252  
**Order line:** 0330 124 2668  
**Email:** enquiries@  
theleprosymissionshop.com  
**Website:**  
theleprosymissionshop.org

## Australia

### The Leprosy Mission Australia

37 Ellingworth Parade  
Box Hill  
Victoria  
Australia 3128  
**Tel:** +61 3 9890 0577  
**Email:** hello@leprosymission.  
org.au  
**Website:** leprosymission.org.au

### The Leprosy Mission Australia Shop

PO Box 293, Box Hill VIC 3128  
Australia  
**Email:** shop@leprosymission.  
org.au  
**Website:** shop.leprosymission.  
org.au

## Bangladesh

The Leprosy Mission Bangladesh  
House-488A, Road-32  
Mohakhali New DOHS  
Dhaka-1206  
**Tel:** +88(2)222281620, 222282058,  
222296395  
**Email:** DCO@TLMBangladesh.org  
**Website:** tlmbangladesh.org

## Belgium

VZW TLM Belgium,  
p/a Wolterslaan 41  
BE-9040 Gent (Belgium)  
**Tel:** +32 474 471 856  
**Email:** tlm.belgium@gmail.com  
**Website:** tlmbelgium.org

## Chad

Mission Evangélique Contre la  
Lèpre (MECL)  
B.P.456 N'Djaména - TCHAD  
**Email:** geeske.zijp@  
leprosymission.org

## Denmark

TLM Denmark,  
Vibevej 12, DK-8766 Nørre Snede  
**Tel:** 0045 35 29 42 54  
**Email:** info@spedalsk.dk  
**Website:** www.spedalsk.dk

## DRC

The Leprosy Mission Congo  
283, Avenue Kato  
Commune de Lingwala, Kinshasa  
B.P. 14.347 Kinshasa 1  
**Email:** cco@tlmcongo.org  
**Tel:** +243810387667

## Ethiopia

PO Box 30480  
Addis Ababa  
Ethiopia  
**Tel:** +0911 611178  
**Email:** beletshachewt@  
tlmethiopia.org

## Finland

Suomen Lepralähetys – Finlands  
Lepramission ry  
Uotinmäentie 9 B 12,  
00970 Helsinki  
**Tel:** +358 449708615  
**email:** rkpohti@gmail.com  
**Website:** lepralahetys.fi

## France

Mission Lèpre France  
3 Square de Megève  
95380 LOUVRES  
**Tel:** 07 83 85 74 95  
**Email:** contact@missionlepre.org  
**Website:** missionlepre.org

## Germany

Lepra-Mission e.V.  
In der Halde 1  
D-75365 Calw  
**Tel:** +49 1575 25 90 217  
**Email:** info@lepramission.de  
**Website:** lepramission.de

## Great Britain

The Leprosy Mission Great Britain  
Goldhay Way  
Orton Goldhay  
Peterborough  
PE2 5GZ  
**Tel:** 01733 370505  
**Email:** hello@LM.org.uk  
**Website:** leprosymission.org.uk

## Hungary

Lepramisszió – Magyarország  
1151 Budapest  
Alag u.3.  
**Tel:** +36-30 6384736  
**Email:** info@lepramisszio.hu  
**Website:** lepramisszio.hu

## India

The Leprosy Mission Trust India  
CNI Bhavan  
16, Pandit Pant Marg  
New Delhi – 110 001  
**Tel:** +91 (0) 11 4353 3300  
**Email:** info@leprosymission.in  
**Website:** leprosymission.in

## Mozambique

38, Eduardo Mondlane Avenue  
Muhala Expansão Neighbourhood  
– Nampula  
**Tel:** +258847583800  
**Email:** pedro.safrao@tlmmoz.org

## Myanmar

No. (156), 5th Floor (A, D)  
Kyun Taw South Ward  
Baho Street  
Sanchaung Township  
Yangon, Myanmar  
**Tel:** +95-9-964602516  
**Email:** zmaung@tlmmyanmar.org

## Nepal

TLM Country Office  
Satdobato-Chapagaun Road  
Talchikhel, Lalitpur  
Nepal  
**Postal address:**  
The Leprosy Mission Nepal  
P.O. Box 151, Kathmandu  
Nepal  
**Tel:** +977-1-5151371  
**Email:** info@tlmnepal.org  
**Website:** tlmnepal.org

## Netherlands

Leprazending (TLM-NL)  
Arnhemseweg 1  
7331 BA Apeldoorn  
**Postal address:**  
Leprazending (TLM-NL)  
Postbox 902  
7301 BD Apeldoorn  
**Tel:** +31 55 76 00 500  
**Email:** info@leprazending.nl  
**Website:** www.leprazending.nl

## New Zealand

591 Dominion Road  
Mount Eden  
Auckland 1041  
New Zealand  
**Postal Address:**  
PO Box 96262  
Balmoral  
Auckland 1342  
**Tel:** +64 9 630 2818  
**Email:** supporterservices@  
leprosymission.org.nz  
**Website:** leprosymission.org.nz

## Niger

The Leprosy Mission Niger  
TLM-Niger Bureau de Maradi,  
Bagalam  
SIM Maradi BP 121  
Maradi – Niger Republic  
**Tel:** +227 96970172

## Nigeria

No-9 Kings Drive  
Fort Royal Homes,  
Estate, Lugbe,  
P.M.B 494, Area 10  
Garki, F.C.T, Abuja  
Nigeria  
**Tel:** +234 09122731679  
**Email:** officetlmn@gmail.com,

## Northern Ireland

TLM Northern Ireland  
Lagan House  
2a Queens Road  
Lisburn  
BT27 4TZ  
Northern Ireland  
**Tel:** +44 (0) 28 9262 9500  
**Email:** info@tlm-ni.org  
**Website:** tlm-ni.org

## Norway

Slagenveien 80 c  
3117 Tønsberg  
Norway  
**Tel:** +47 91111056  
**Email:** lepramisjonen@  
gmail.com  
**Website:** lepramisjonen.org

## Papua New Guinea

The Leprosy Mission – Papua  
New Guinea (TLM-PNG)  
Unit 7, Wapil Crest Apartments  
Section 20, Lot 15  
Budoa Ave  
East Boroko  
**Postal address:**  
PO Box 3041, Boroko, 111,  
National Capital District (NCD),  
Papua New Guinea  
**Tel:** +675 7377 9974 or 7412 2825  
**Email:** leprosymission@  
tlm-png.org

## South Korea

31 Duryugongwon-ro 28gil  
Dalseo-gu  
Daegu  
Rep.of Korea (42670)  
**Tel:** +82 53 623 1001

## Sweden

Lepramissionen  
Mastgatan 2D  
SE-692 71 Kumla  
Sweden  
**Tel:** +4619583790  
**Email:** info@lepramissionen.se  
**Website:** lepramissionen.se

## Switzerland

### German speaking office:

Lepra-Mission Schweiz  
Bernstrasse 15A  
3360 Herzogenbuchsee  
Switzerland  
**Tel:** +41 62 961 83 84  
**Email:** info@lepramission.ch  
**Website:** lepramission.ch

### French speaking office:

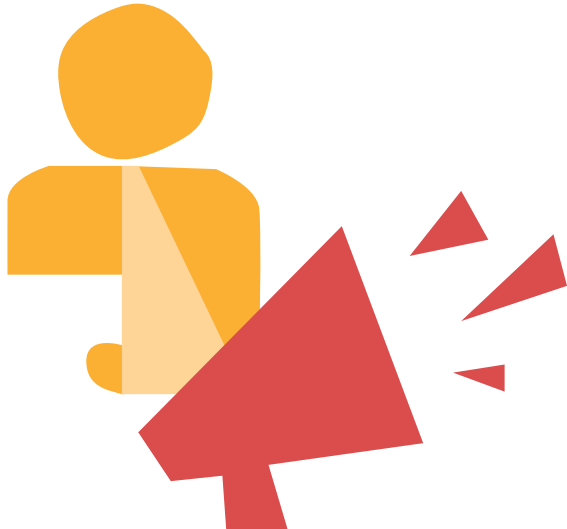
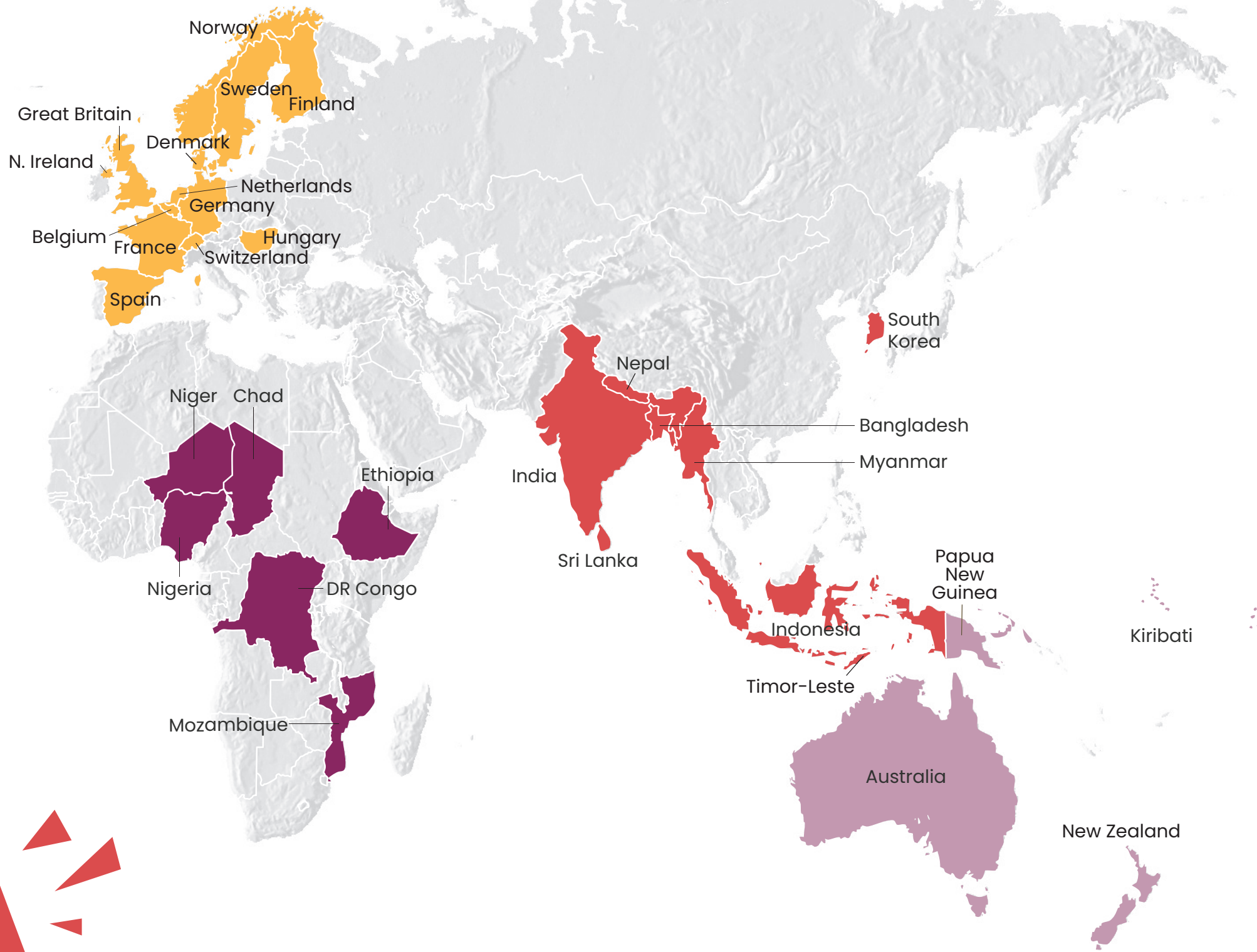
Mission Lèpre Suisse  
Route de Denges 38  
1027 Lonay  
Switzerland  
**Tel:** +41 21 801 50 81  
**Email:** info@missionlepre.ch  
**Website:** missionlepre.ch

## Timor-Leste

Misaun Lepra Timor-Leste (ML-TL)  
Turleu-Tibar, PO BOX 84  
Liquica – Timor-Leste  
**General phone line:**  
(+670) 77977559  
**Feedback:** (+670) 76618000

# WHERE WE WORK

The Leprosy Mission works hand-in-hand with governments, local communities, partner NGOs, local churches, WHO, Christian partners, and many others to defeat leprosy and transform the lives of those affected. Together we provide treatment and care for anyone living with the effects of leprosy in 16 countries across Asia, Africa, and the Pacific. This would not be possible without the support of hundreds of thousands of people around the world that have responded to this call.





# HOW TO GET INVOLVED

## Prayer

One of the most powerful gifts you can give us is prayer. By using this diary, you've done that, so thank you.

## Giving

Our work receives substantial funding from individual donors – just like you – with 31 percent of our funding coming from people giving out of their own pockets, through regular giving and one-off donations.

The money you give today can help to end leprosy and transform lives across the world.

## Volunteering

Our army of volunteers across the world is having a huge impact and there are lots of volunteering opportunities in many of the countries that we work in.

## Leaving a legacy

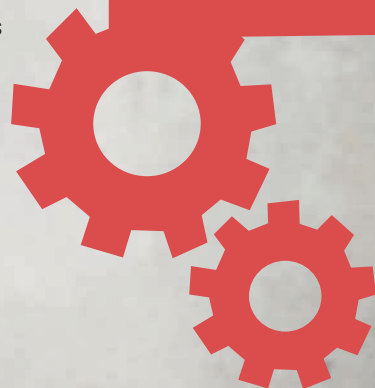
Around 14 percent of our income comes through people who leave a legacy in their Will.

Your legacy can be a world free from leprosy, where every person affected by leprosy is cured, healed, and included.

## Shop

Visit [theleprosymissionshop.org](http://theleprosymissionshop.org) or [leprosymission.org.au/shop](http://leprosymission.org.au/shop) to find gifts, books, crafts, homeware, and tasty treats. The proceeds from the sales on these websites are funnelled back into our work to defeat leprosy and transform lives.

**Find out how to give, volunteer, or leave a legacy today by finding the website and contact details of The Leprosy Mission in your country. Find their details on pages 78-79.**







# THE LEPROSY MISSION'S GLOBAL DAY OF PRAYER

**Wed 6 May 2026**

The Leprosy Mission is hosting a worldwide day of prayer.

Prayer has always been essential to what we do and so we are bringing our staff, supporters, volunteers, and partners together to unite in prayer for a world without leprosy.

**Find out how you can get involved by contacting The Leprosy Mission in your country (see p.78).**



Photo credit: Tom Bradley

## GLOSSARY TERMS

ADT	Alliance Development Trust – our partners in Sri Lanka
ALERT	All Africa Leprosy Rehabilitation and Training Centre – TLM's partner in Ethiopia
ALO	Advancing Leprosy and Disadvantaged Peoples Opportunities – an OPL in Bangladesh
BHCP	Bougainville Healthy Communities Programme
CAFE	Collaborative Action in Finding hidden cases and increasing Expertise – a project in Sri Lanka
CBID	Community-Based Inclusive Development
CBR	Community-Based Rehabilitation
CISU	An independent member-based organisation with approximately 300 Danish civil society organisations
CKU	Centre for Church based Development – a Danish Resource Centre for development cooperation through church-based networks
DBLM	Danish-Bangladesh Leprosy Mission Hospital – TLM's Hospital in Bangladesh
ECDD	Ethiopian Centre for Disability and Development
ELETRA	Ending Leprosy Transmission Project in Timor-Leste
ENAPAL	Ethiopian National Association of Persons Affected by Leprosy
GPZL	Global Partnership for Zero Leprosy
IDEA	International Association for Integration, Dignity and Economic Advancement
ILEP	International Federation of Anti-Leprosy Associations
ITML	Interruption of Leprosy Transmission Project – a project in Timor-Leste
KKM	Kaveri Kala Manram – our partners in Sri Lanka
LPASAL	The Leprosy Peoples Association of Sri Lanka – our partners in Sri Lanka
LPRF	Leukocyte Platelet Rich Fibrin – a treatment for leprosy ulcers
MAPAL	Myanmar Association of Persons Affected by Leprosy
MDT	Multi-Drug Therapy

ML-TL	Misaun Lepra Timor-Leste
MORHAN	Movement of Reintegration of Persons Afflicted by Hansen's disease – an Organisation of Persons Affected by Leprosy in Brazil
NDTs	Neglected Tropical Diseases
NGO	Non-Governmental Organisation
NLR	until No Leprosy Remains – A Dutch NGO
OPACLO	Organisation of Persons Affected by Leprosy in Congo
OPDs	Organisations of Persons with Disabilities
OPLs	Organisations of Persons Affected by Leprosy
PCR lab	Polymerase chain reaction – Laboratory technique to multiply a DNA sample for study
PEP	Post-Exposure Prophylaxis – a preventative treatment that reduces the risk of developing leprosy after exposure to the disease
PEP ++	Post-Exposure Prophylaxis that is rifampicin plus one or more other drugs
PEPCOM	Post Exposure Prophylaxis in Community – a project in Indonesia
PHACE	Preventative Health and Community Empowerment Project in Timor-Leste and Kiribati
New SADLE	New Skill and Development Learning Experiences – a Fair Trade group in Nepal
SDGs	Sustainable Development Goals
SDR-PEP	Post-Exposure Prophylaxis through providing a single dose of the antibiotic Rifampicin
SHGs	Self-Help Groups
SIDA	The Swedish International Development Cooperation Agency
SIM CSL Danja Hospital	Centre de Santé Léproserie, a TLM partner in Niger
TABITHA – Project	Leve-toi et marche (get up and walk) – a project in DR Congo
TLM	The Leprosy Mission (often with country name added)
WASH	Water, Sanitation and Hygiene
WHO	World Health Organization
WLD	World Leprosy Day



# Our Vision: Leprosy Defeated, Lives Transformed

## The Leprosy Mission Prayer

Almighty Father, the giver of life and health, look mercifully on those who suffer from leprosy. Stretch out your hand to touch and heal them as Jesus did during his earthly life.

Grant wisdom and insight to those who are seeking the prevention and cure of the disease. Give skill and sympathy to those who minister to the patients. Reunite the separated with their family and friends.

And inspire your people with the task set before The Leprosy Mission, that it may never lack the staff or the means to carry on its healing work, in accordance with your will, and to the glory of your holy name.

We ask this for the sake of Jesus Christ, your Son, our Lord.

Amen



[facebook.com/TheLeprosyMissionInternational](https://facebook.com/TheLeprosyMissionInternational)



[youtube.com/TheLeprosyMissionInternational](https://youtube.com/TheLeprosyMissionInternational)



[linkedin.com/company/the-leprosy-mission-international](https://linkedin.com/company/the-leprosy-mission-international)



PrayerMate link  
[praynow4.org/leprosymission](https://praynow4.org/leprosymission)

**[leprosymission.org](https://leprosymission.org)**

A publication of The Leprosy Mission International